

ASSOCIATION TO BENEFIT CHILDREN



ANNUAL REPORT 2021



Our Mission

A champion for all children, ABC offers every child a joyful, beloved life by creating compassionate programs in urgent response to the needs of New York City's most vulnerable children.

Our Vision

For all children to have a healthy, safe life full of joy, learning, and love in a nurturing family.

These children suffer from the complications of poverty and toxic stress - knowing want, hunger, chronic disease, terror, destitution, violence, and despair. Often, they are newcomers to our shores, struggling alone in fear and isolation. Each night, too many New York City children have no home at all, no place to lay their heads.

Over half the children in the South Bronx and 40% of the children in East Harlem live in poverty.

In our city, children under the age of 6 are the largest single population in the shelter system.

Statewide, suicide is the second leading cause of death for 15 to 19 year olds and third for children aged 4 to 15.

*“There is only one child in the world and the child’s name is All Children”
- Carl Sandburg*



A LEGACY OF LIGHT

ABC has been a relentless champion for children, unflinching in its commitment to protect every child. The organization operates on interlocking levels to provide compassionate care and support for those in need as well as advocacy and action to improve public policies both within and far beyond the borders of New York City. ABC has fought with determination to bring relief and the promise of a brighter future to hungry children, to homeless children warehoused in hotels and shelters, to infants stored in hospitals, to preschool-age children with special needs denied access to mainstream early education, to children at risk of HIV/AIDS in foster care, to all infants born with HIV, and to homeless children suffering from asthma. ABC strives to incubate evidence-based, scalable programs that put the needs of children first.

Over thirty years ago, ABC focused national attention on the plight of hungry children through widely disseminated reports; newspaper, television, and radio coverage; testimony in public hearings in New York City and State; and the testimony of homeless children before the House Select Committee on Hunger in Washington, DC. ABC created the blueprint for cost-effective, replicable meal distribution programs with the Yorkville Soup Kitchen that fed tens of thousands of hungry children and families hot, nutritious meals in public schools. Hot meal programs across the city replicated this groundbreaking model for utilizing existing facilities, supplies, and the expertise of food service personnel in public schools.



ABC’s educational advocacy began with Merricat’s Castle School, which established the right to inclusionary preschool education for young children with disabilities. ABC then created the first of its kind, state-of-the-art early childhood center for homeless children in the “belly of the beast”—the infamous Martinique Hotel—where New York City was warehousing homeless families. It provided high quality education, family support services, and health and mental health care to children who previously had no safe space to play and learn. ABC also fought to secure the right of homeless families to preventive services such as housing, counseling, and day care in its class action law suit *Grant v. Cuomo*. Thanks to litigation by the National Law Center on Homelessness & Poverty, joined by ABC, the McKinney-Vento Act includes a guarantee that all homeless children are able to continue attending the school where they were originally enrolled.

Leading the fight for humane housing for homeless families, ABC set the standard for safe, cost-effective transitional housing. ABC used the same government funds squandered on squalid, dangerous, and expensive “welfare hotels” and barracks-style shelters to successfully transform a dilapidated building in East Harlem into a bright, warm, and safe transitional housing program called Rosie and Harry’s Place. This program provided decent three-bedroom apartments with eat-in kitchens, on-site early childhood education, youth programming, wraparound and rehousing services, and a shared garden and playground. As the barracks-style shelters and welfare hotels were shut down, Rosie and Harry’s Place became the replicable model throughout the city and state for transitional supportive housing. This dramatically reduced the time it took for large families with complex needs to reclaim their independence and move into permanent housing. ABC was also the first to use untapped HOPWA/HUD funds to build permanent supportive housing for homeless families with HIV, creating another replicable model in the process.

At one time, medically-fragile infants born into poverty were warehoused in hospital wards, sometimes for months and often tethered to cribs. ABC brought two class-action suits against New York City and State that ultimately rescued “Boarder Babies” across the nation. Won by ABC counsel Mitchell S. Bernard along with David Frankel and Thomas Moreland of Kramer, Levin, Nessen, Kamin & Frankel and Pamela Jarvis of Fried, Frank, Harris, Shriver & Jacobson, ABC’s landmark litigations ended this cruel and expensive policy and practice. ABC created Cody Gifford House to demonstrate that medically-fragile infants could live safely at home.



In the early days of the pediatric AIDS crisis, the state anonymously tested infants for HIV infection without disclosing the results to their mothers. As soon as effective medical treatments and a test to differentiate between infant antibodies and infection were developed, ABC successfully battled to ensure that at-risk women and children had the right to receive early identification, counseling, and treatment for HIV/AIDS. The far-reaching policy reform that ABC won with the pro bono legal help of Colin Crawford alongside Margaret Keane and John Kinzey of LeBoeuf, Lamb, Greene & MacRae, has increased medical support for children with HIV/AIDS and helped totally eliminate maternal transmission of the infection in New York State. In 1990, 700 babies were born with the disease. By 2018, the perinatal transmission rate was zero.



ABC has long campaigned for improvements in and access to children's health and mental health care. An ABC victory in federal court, fought by Mitchell S. Bernard of the Natural Resources Defense Council, David Frankel of Kramer, Levin, Naftalis & Frankel, and Steve Banks at The Legal Aid Society, guaranteed that all homeless children suffering from asthma receive vital primary care, including outreach, early and free periodic screening, a primary care provider, diagnosis, corrective treatment, and educational counseling. This has helped ensure that this potentially debilitating condition is diagnosed before it becomes medically more complex, costlier to treat, and permanently disabling.



Whenever New York City is in crisis, ABC responds. During the aftermath of 9/11 and Hurricane Katrina, ABC set up safe spaces where children could be supported and process trauma. During the worst of the COVID-19 pandemic, ABC stayed open to provide emergency childcare and distribute food.

A FORCE FOR CHANGE



ABC resolves to be vigilant, to challenge each assault on childhood, and to advocate for the voiceless and most vulnerable. ABC's responsive programs, rooted in its commitment to serve the whole family, are grounded in replicable, research-based models that break the cycles of poverty. By championing its children and their families from cradle to adulthood, ABC aims to meet the complex needs of those struggling to survive in New York City while also bringing about wider systemic change.





EMERGENCY CHILD CARE

Located at the Graham School at Echo Park, skilled staff from all ABC programs provided onsite nurturing care for the children of first responders for up to 11 hours a day to meet the demanding and long shifts of the police, firefighters, doctors, nurses, ambulance drivers, and other essential health workers at the frontline of what was then the epicenter of the pandemic. For almost six months, children of all ages came together to find comfort, solace, friendship, and joy.



COVID-19 SCREENING

Thanks to collaborations with Project Hope, Columbia University, and Robin Hood, among others, ABC has implemented a robust COVID-19 screening project, which provides information, resources, and crisis counselling to families in need. Testing is available to parents and children every week at drop off and pick up, and a vaccine information campaign is underway.



COVID-19 RELIEF

In immediate response to the COVID-19 pandemic, ABC mobilized all its resources to meet the urgent needs of children and families who, in the blink of an eye, became more vulnerable than ever. Despite school closures and city-wide disruption, ABC's programs quickly adapted with creative new approaches to remain connected to each child and launched new initiatives designed to alleviate the devastating burden of the pandemic on families. At the center of relief efforts was the distribution and delivery to families -- wherever they were -- of well over a quarter of a million meals, formula, infant supplies, and diapers, as well as tablets with data plans and art and school supplies. ABC also responded to families' most dire emergencies with the provision of desperately needed funds.

ABC's early childhood and youth programs operated online throughout the spring and summer. Although children were no longer in their classrooms, they still followed a rigorous curriculum with language, math, and science at its core, and enjoyed virtual visits to Bunny's Garden, Zoom sing-a-longs, and online occupational, speech, and physical therapy sessions. All clinical mental health staff were trained to work virtually, and ABC's brave first responders, the Children's Mobile Crisis Team (CMCT) and All Children's House preventive services, travelled to homes, shelters, and wherever a crisis unfolded to provide essential treatment and support.





EARLY CHILDHOOD PROGRAMS



The centerpiece of ABC’s “whole child” approach is early childhood education for infants, toddlers, and preschoolers. And, at the heart of ABC’s early childhood education programs is creative play. Research has shown that ample opportunities for play are essential for helping young children’s brains develop the neural pathways necessary for learning as well as critically important social skills like collaboration, negotiation, decision making, and conflict resolution. Through structured and unstructured play in combination with expert teaching and carefully crafted curricula, children are encouraged to reach their full potential, gaining the skills they need for future school success along with fundamentals such as patience, compassion, resilience, and respect for self and others. While each of ABC’s schools has its own special focus, all are inclusive, celebrate diversity, instill a lifelong love of learning, and honor parents’ central role in their children’s education and well-being. For children with special educational and developmental needs, instruction may include speech therapy, occupational therapy, physical therapy, or play therapy. Every student receives a full range of medical and developmental screenings followed by the appropriate services that address each individual need, as well as embedded access to mental health treatment.



EARLY INTERVENTION PROGRAMS FOR CHILDREN BIRTH TO THREE



Cody Gifford House offers Early Head Start and Early Intervention services including educational instruction and a comprehensive array of therapies to infants and toddlers with severe developmental disabilities and delays and/or serious medical conditions. Children from diverse backgrounds play and learn together in nurturing classrooms and a beautiful backyard playground.

The **Keith Haring School**, located at ABC’s Permanent Supportive Housing Program for families with HIV/AIDS, provides occupational, physical, and speech therapies, educational instruction, Early Head Start, and mental health counseling to children with complex developmental delays.

Home-based services further expand the reach of ABC’s two vital Early Intervention programs by bringing classroom therapies and lessons into the homes of many more children.



EARLY CHILDHOOD PROGRAMS FOR CHILDREN BIRTH TO FIVE



The **Graham School** at Echo Park, ABC’s multi-service family center in East Harlem, includes ten early childhood classrooms that offer the highest-quality Preschool Special Education, Early Head Start, Head Start, and Universal Pre-Kindergarten programming. In addition to an indoor gym, rooftop playground, and a beautiful garden, the Graham School’s location in the heart of East Harlem provides easy access to in-house mental health and community services to children and parents.

PRESCHOOL PROGRAMS FOR CHILDREN TWO TO FIVE



At **Merricat’s Castle School**—the national model for inclusionary preschool education—typically developing children and children with special needs learn together in three charming preschool classrooms and a beautiful garden playground.



At **Cassidy’s Place**, preschoolers who live in poverty, have serious developmental and medical disabilities, and/or are homeless or in foster care play and learn in nine dynamic classrooms. Blending Head Start, Preschool Special Education, and Universal Pre-Kindergarten, Cassidy’s Place offers a full day of education and comprehensive support services. With the addition of an Early Head Start classroom and two self-contained classrooms, Cassidy’s Place now serves children two to five and provides continuity for children moving on from ABC’s Early Intervention programs.



YOUTH SERVICES - SOMEONE TO WATCH OVER ME



ABC's year-round youth services provide the structure, nurturing care, positive experiences, and whole family support that foster educational, social-emotional, moral, and creative growth and encourage at-risk children from age 5 to adulthood to stay in school and thrive. Through **Someone To Watch Over Me** ABC works with children who are the most at-risk of dropping out of school and/or criminal justice involvement, so they know we always have their backs. From as early as kindergarten, ABC ensures that each child becomes, and remains, positively focused and engaged. Skilled youth workers, family specialists, and educators create a safe and stimulating space where children are motivated to develop the academic skills and emotional strengths necessary for success in the classroom and in life. Partnerships in the community reinforce our work. Police Youth Coordination Officers regularly join in play, recreation, and education activities, so that from the earliest age, our kids and their families really get to know our police and are known and watched over.



At the center of ABC's youth services is a therapeutic **Afterschool Program**, which includes academic supports, individualized tutoring and mentoring services, music, art, poetry, ballet, theater, sports, photography, technology, robotics, digital/internet safety, gardening, and healthy cooking classes. Afterschool also offers an **Internship Program** for vocationally-bound high school students with significant cognitive and physical disabilities; and workshops, internships and college counseling for older youth. Kids enrolled in youth services are able to keep fit and healthy thanks to the newly refurbished workout and exercise space in **Roy's Room**.



STUDY BUDDIES CONNECT



Study Buddies Connect (SBC) is a free virtual tutoring program. Launched and developed with prescient vision and expertise by Peggy Schleiff and Gail Geronemus, SBC provides individualized academic support for ABC students by pairing them with volunteer mentors. Using Zoom and other online applications to connect, volunteers work from their homes, offices, or wherever they may be. Buddy pairs typically meet for 30 minutes once or twice per week at a mutually agreed upon time.

SBC also offers math pods, homework support from recent college graduates, English Language Learning (ELL) tutoring for students currently learning English, and reading screenings performed by a volunteer speech pathologist, as well as consistent involvement from SBC staff in the tutors' efforts and in the lives of the families served. SBC's goal is to serve children from all of ABC's programs.



AN OPEN DOOR TO THE COMMUNITY



The Open Door is the focal point for ABC's community services. Driven by the urgent needs of families, it provides nutritious meals, enriching activities, and a safe refuge to families from across New York City. The Open Door's spirit of community engagement and support is an essential part of ABC's COVID-19 response with staff regularly checking in with families by phone or during food and supply delivery.



Bunny's Garden, located on 124th Street, provides children and families with an oasis in which to grow their own produce, learn about healthy eating habits, and explore nature. The gardening program creates a multigenerational platform where socioeconomic status does not determine the quality of food available and families themselves are in charge of their nutritional health. Although physical visits to the garden have been limited by the COVID-19 pandemic, children continue to visit and discuss the garden virtually. A new blog allows parents and volunteers to post cooking videos that use ingredients from the garden.



The Joyce and David Dinkins Center for Equity (C4E) responds to the persistent and urgent call from families for more robust support and services in East Harlem and the South Bronx. This includes legal assistance; special education, immigration, health, and mental health advocacy; and community organizing. Through the Center for Equity, ABC serves as an expert guide to help families through the complex education, health, and immigration systems. The Center for Equity seeks to combat the racial, gender, class, and educational inequities that run deep in New York City and throughout the US by boldly advocating for care, safety, justice, hope, and joy for all.





FAMILY PRESERVATION



ABC's preventive services program, **All Children's House**, serves children from birth to age 5 who are at the highest risk for morbidity and mortality resulting from abuse and neglect. These families are among New York City's most fragile, having experienced complex, compounded, and often multi-generational trauma.

All Children's House uses the Child-Parent Psychotherapy (CPP) model, an evidenced-based, trauma-informed therapeutic intervention that strengthens child-parent attachment, parental empathy, and resilience in families. Offered in the home by licensed therapists, CPP is helping to break cycles of abuse and neglect while promoting long-term stability. The CPP model helps to build and support an invincible bond between child and caregiver, which shields children against the extreme strains of poverty and complex trauma. In addition to case management services, therapists provide family counseling, parent support groups, budgeting management, legal assistance, and housing and child care referrals. All Children's House collaborates with community-based organizations, schools, hospitals, and domestic violence shelters to facilitate referrals. These programs enable ABC to meet the urgent needs of families who are already court-involved, with the goal of preventing abuse and neglect while keeping families together and children safe.

Due to the program's effectiveness, the CPP model incubated by ABC provided the blueprint for replication in all of New York City's five boroughs. ABC continues to be responsible for providing preventive services throughout Manhattan, while trusted partner organizations in the rest of the city are achieving citywide systems change by implementing ABC's CPP model in their own preventive services programs.



CHILDREN'S MOBILE MENTAL HEALTH

One in five children from birth to age 18 has a diagnosable mental disorder. Even the very youngest children often suffer from significant anxiety, serious depression, post-traumatic stress disorder, and attachment disorders. Stressors connected to poverty frequently increase the risk of mental health problems, especially if there is repeated sustained toxic stress from complex trauma that includes abuse, domestic violence, and neglect. For well over twenty years, ABC has been working to ensure easy access to the most effective, compassionate mental health services for children living in poverty. Seeking always to keep children in crisis out of emergency rooms and costly and restrictive institutions, ABC's **Fast Break Children's Mobile Mental Health Services** deliver a comprehensive array of interventions and treatments that meet the urgent needs of vulnerable children.

Led by a highly-skilled, Board-certified Child Psychiatrist, Fast Break offers a full range of mental health services from psychiatric assessments and medication management to a wide variety of therapies and modalities. The Fast Break network includes three dedicated children's mental health clinics at ABC sites, four school-based licensed mental health clinics that serve a total of ten individual schools, and eight school-based mental health programs. ABC's three primary Fast Break clinics are: Echo Park, ABC's one-stop shop with integrated comprehensive services; the East 115th Street clinic headquartered at the East Harlem Health Action Center and co-located with other health care organizations, including those that focus on maternal, prenatal and pediatric health; and the Bronx clinic, which specializes in treatment of birth to five-year-olds and provides consultations to faculty and parents in 20 early childhood and childcare centers.



Fast Break's **School-Based Mental Health Program** conducts crisis intervention for children and provides trainings in eighteen New York City public schools so educators and parents can recognize and respond appropriately to the mental health needs of their children. ABC is dedicated to providing a continuum of care for children of all ages by maintaining a presence not only in preschools and kindergartens but also in elementary, middle, and high schools. The school-based clinics and programs address the pressing needs of children during every transition in their journey from birth to adulthood.

The essential mental health care and support that ABC offers does not end with the school day. Fast Break's **Children's Mobile Crisis Team** is the only program providing rapid crisis intervention for children anywhere in Manhattan. The team is available around the clock and meets with children to stabilize their crises wherever they are. The Children's Mobile Crisis Team is now aging up to serve young adults, as well as developing a focus on children of all ages dealing with substance abuse.

Fast Break+ expands ABC's crisis intervention service by ensuring that every child is always connected with services in their own community. For many children and families served by ABC, this intervention is the difference between having access to ongoing mental health services and the risk of future institutionalization and the trauma that comes with it. ABC's vision is to deliver mental health treatment wherever the child is most comfortable, whether it be a school, a shelter, a home, or the street. Fast Break+ also includes a collaboration with the NewYork-Presbyterian Morgan Stanley Children's Hospital through which ABC provides ongoing, home-based treatment and case management for children who have had multiple hospitalizations or emergency room visits and are at high risk for rehospitalization. Therapists based onsite at the hospital connect and engage with children and their families at discharge, as well as with a social worker, pediatrician, psychiatrist, and other hospital staff members as appropriate, ensuring that trust, engagement, and information-sharing starts from the very first interaction.



SUPPORTIVE HOUSING

ABC's **Supportive Housing Program** provides permanent supportive housing for formerly homeless families living with HIV and AIDS. These families live in 2- and 3-bedroom apartments with eat-in kitchens and receive critical support services and access to the Keith Haring School. In addition to providing personalized support and case management, the program promotes school attendance and community integration.



VOLUNTEERS

At ABC, volunteers are treasured partners. Throughout the year, volunteers—including students, homemakers, bankers, lawyers, poets, musicians, doctors, artists, chefs, teachers, and retirees from all walks of life—share their time, interests, and skills to help make a critical difference in the lives of ABC's children and families. During the COVID-19 pandemic, volunteers have redoubled their efforts and enthusiasm, finding ways to create a positive impact virtually. Working together bridges the gap between diverse cultures and economic strata and builds connections that have the power to change lives.





OUR IMPACT:

The results of ABC's rigorous annual evaluation and analysis show that our programs have a significant, positive impact on the lives of the children and families we serve. We aim to nurture and protect children at every stage of their development.



TOP 5%

Starting on the Right Track

QUALITYstarsNY rates ABC's Early Childhood Programs in the top 5% of all early childhood programs in New York City. Over the course of the 2019-20 program year, despite the disruptions caused by COVID-19, the percentage of children meeting or exceeding expectations increased across all developmental domains, almost doubling for math skills.



98.5%



Supporting Social-Emotional Well-Being

ABC was able to pivot to provide both virtual and in-person mental health treatment, serving over 1000 children of all ages in the last program year. 98.5% of those children avoided hospitalization or rehospitalization, keeping them out of costly and restrictive institutions and helping them maintain stable and healthy lives.

99%

Protecting the Most Vulnerable

East Harlem and the South Bronx have some of the highest numbers of children in foster care in New York City. As a result of intensive therapeutic work and case management that engender secure attachments between parents and their very young children, 99% of the families served by ABC's All Children House remain together.



100%

Across the Finish Line

Although graduation rates in the communities we serve are 72% on average, 100% of high schoolers participating in ABC's Youth Services programs graduated on time in four years.

A Beacon of Hope

From March to September, during the worst of the COVID-19 pandemic, ABC distributed and delivered over 250,000 meals and provided over 11 hours a day of emergency childcare. We maintained weekly, and often daily, contact with children and families in all of our programs, totaling more than 30,000 phone calls, in-person visits, and virtual sessions. We also guaranteed that every child who needed a device received one.



Stepping Up to the Plate

Bunny's Garden distributed over 400 gallon-sized bags of fresh produce in 2020.





On behalf of our children and families, ABC is deeply grateful to its supporters.

For so generously sustaining ABC's programs, a very special thank you to:

Robin Hood

Lee S. Ainslie III, Jacklyn Bezos, Victoria B. Bjorklund, Jeff T. Blau, Emma Bloomberg, Scott Bommer, Peter F. Borish, Geoffrey Canada, Cecily Carson, Anne Dinning, Glenn Dubin, Mar-ian Wright Edelman, David Einhorn, Mary Callahan Erdoes, Roland Fryer, John A. Henderson, Jeffrey R. Immelt, Paul King Jr., Joel S. Marcus, Powell McCormick, Wes Moore, Doug Morris, Daniel S. Och, John Overdeck, Robert Pittman, David Puth, Robbins, David Saltzman, Alan D. Schwartz, David M. Solomon, Barry Sternlicht, Steve Stoute, John Sykes, David Tep-per, Marta Tienda, Kenneth G. Tropin, Beatrice W. Walters

Patrons

Robert Pittman, David Puth, Larry Robbins, David Saltzman, Alan D. Schwartz, David M. Solomon, Barry Sternlicht, Steve Stoute, John Sykes, David Tep-per, Marta Tienda, Kenneth G. Tropin, Beatrice W. Walters

Champions

Joseph H. Flom Foundation
 Stephen Graham
 Keith Haring Foundation
 KKR & Co, Inc.
 Mother Cabrini Health Foundation
 Neuberger Beran
 New York Community Trust
 Amie Nuttall
 George & Linea Roberts

Estate of Sheila Scheingold
 Tiger Foundation

Benefactors

Anthony Anagnostakis
 Steven & Alexandra Cohen Foundation
 Marie-Josée & Henry R. Kravis Foundation
 L&M Development Partners
 Jeffrey Lieberman & Holly Fogle
 Oded Regev & Judy Vale
 The Ripple Foundation
 Sirius Fund
 Callahan Stern Family Charitable Foundation
 Kaya Van Ameringen Foundation
 Michael & Lynne Wolitzer
 Pincus Foundation
 Wasily Family Foundation

Patrons

Matthew & Suzanne Donohue
 Jennifer Katherine Gates
 Julius & Belma Gaudio
 Roy & Gail Geronemus
 William Janetschek
 Joan Lacagnina
 The Lerer Family Foundation
 Nancy & Edwin Marks Family Foundation
 Mejean Family Fund
 Open Hearts Foundation
 PDT Partners, LLC

Jeffrey & Elizabeth Perlman
 Henry & Peggy Schleiff
 Morris & Alma Schapiro Fund
 Todt Corporation
 Triple Threat Productions
 Leonard & Robert Weintraub Family Foundation
 Leslie Wildes

Advocates

Anonymous
 Nathan Z. Armour Foundation
 Vanessa & Damien Baque-Stanton
 Lloyd & Laura Blankfein
 Gretchen Buchenholz
 Carson Family Charitable Trust
 Estate of Ernest W. Dodd
 Pat & Mary Duff
 Frelinghuysen Foundation
 Joyce and Irving Goldman Family Foundation
 Suzan Gordon
 Karenna Gore
 Russell Grinnell Memorial Trust
 Jeff Horing
 Hyde & Watson Foundation
 Meredith Kane
 Kaufmann Foundation
 Estate of William Laggren
 Gregory Lee & Amanda Moretti
 Stephen & May Cavin Leeman Foundation
 Levy ImpAct Charitable Foundation
 Robert & Dana Lewin
 Anna Markus
 Henry & Laura McVey
 David & Miriam Phalen
 Edward & Betsey Pick
 Dina Powell & Dave McCormick
 RBC Capital Markets
 Richman Family Foundation
 Garth Priber & Katey Riordan
 Rite Aid Foundation Kids
 Cents
 Alex & Amy Rotter
 Stephanie & Fred Shuman Family Foundation
 Adam & Melanie Smith
 David & Amy Sorkin
 Anil Stevens & Anita Krishnan
 Sunshine Foundation
 Vine Family Charitable Fund
 Roberta Watson
 William E. Weiss Foundation

Anonymous
 Nathan Z. Armour Foundation
 Vanessa & Damien Baque-Stanton
 Lloyd & Laura Blankfein
 Gretchen Buchenholz
 Carson Family Charitable Trust
 Estate of Ernest W. Dodd
 Pat & Mary Duff
 Frelinghuysen Foundation
 Joyce and Irving Goldman Family Foundation
 Suzan Gordon
 Karenna Gore
 Russell Grinnell Memorial Trust
 Jeff Horing
 Hyde & Watson Foundation
 Meredith Kane
 Kaufmann Foundation
 Estate of William Laggren
 Gregory Lee & Amanda Moretti
 Stephen & May Cavin Leeman Foundation
 Levy ImpAct Charitable Foundation
 Robert & Dana Lewin
 Anna Markus
 Henry & Laura McVey
 David & Miriam Phalen
 Edward & Betsey Pick
 Dina Powell & Dave McCormick
 RBC Capital Markets
 Richman Family Foundation
 Garth Priber & Katey Riordan
 Rite Aid Foundation Kids
 Cents
 Alex & Amy Rotter
 Stephanie & Fred Shuman Family Foundation
 Adam & Melanie Smith
 David & Amy Sorkin
 Anil Stevens & Anita Krishnan
 Sunshine Foundation
 Vine Family Charitable Fund
 Roberta Watson
 William E. Weiss Foundation

Anonymous
 Nathan Z. Armour Foundation
 Vanessa & Damien Baque-Stanton
 Lloyd & Laura Blankfein
 Gretchen Buchenholz
 Carson Family Charitable Trust
 Estate of Ernest W. Dodd
 Pat & Mary Duff
 Frelinghuysen Foundation
 Joyce and Irving Goldman Family Foundation
 Suzan Gordon
 Karenna Gore
 Russell Grinnell Memorial Trust
 Jeff Horing
 Hyde & Watson Foundation
 Meredith Kane
 Kaufmann Foundation
 Estate of William Laggren
 Gregory Lee & Amanda Moretti
 Stephen & May Cavin Leeman Foundation
 Levy ImpAct Charitable Foundation
 Robert & Dana Lewin
 Anna Markus
 Henry & Laura McVey
 David & Miriam Phalen
 Edward & Betsey Pick
 Dina Powell & Dave McCormick
 RBC Capital Markets
 Richman Family Foundation
 Garth Priber & Katey Riordan
 Rite Aid Foundation Kids
 Cents
 Alex & Amy Rotter
 Stephanie & Fred Shuman Family Foundation
 Adam & Melanie Smith
 David & Amy Sorkin
 Anil Stevens & Anita Krishnan
 Sunshine Foundation
 Vine Family Charitable Fund
 Roberta Watson
 William E. Weiss Foundation

Anonymous
 Nathan Z. Armour Foundation
 Vanessa & Damien Baque-Stanton
 Lloyd & Laura Blankfein
 Gretchen Buchenholz
 Carson Family Charitable Trust
 Estate of Ernest W. Dodd
 Pat & Mary Duff
 Frelinghuysen Foundation
 Joyce and Irving Goldman Family Foundation
 Suzan Gordon
 Karenna Gore
 Russell Grinnell Memorial Trust
 Jeff Horing
 Hyde & Watson Foundation
 Meredith Kane
 Kaufmann Foundation
 Estate of William Laggren
 Gregory Lee & Amanda Moretti
 Stephen & May Cavin Leeman Foundation
 Levy ImpAct Charitable Foundation
 Robert & Dana Lewin
 Anna Markus
 Henry & Laura McVey
 David & Miriam Phalen
 Edward & Betsey Pick
 Dina Powell & Dave McCormick
 RBC Capital Markets
 Richman Family Foundation
 Garth Priber & Katey Riordan
 Rite Aid Foundation Kids
 Cents
 Alex & Amy Rotter
 Stephanie & Fred Shuman Family Foundation
 Adam & Melanie Smith
 David & Amy Sorkin
 Anil Stevens & Anita Krishnan
 Sunshine Foundation
 Vine Family Charitable Fund
 Roberta Watson
 William E. Weiss Foundation

Anonymous
 Nathan Z. Armour Foundation
 Vanessa & Damien Baque-Stanton
 Lloyd & Laura Blankfein
 Gretchen Buchenholz
 Carson Family Charitable Trust
 Estate of Ernest W. Dodd
 Pat & Mary Duff
 Frelinghuysen Foundation
 Joyce and Irving Goldman Family Foundation
 Suzan Gordon
 Karenna Gore
 Russell Grinnell Memorial Trust
 Jeff Horing
 Hyde & Watson Foundation
 Meredith Kane
 Kaufmann Foundation
 Estate of William Laggren
 Gregory Lee & Amanda Moretti
 Stephen & May Cavin Leeman Foundation
 Levy ImpAct Charitable Foundation
 Robert & Dana Lewin
 Anna Markus
 Henry & Laura McVey
 David & Miriam Phalen
 Edward & Betsey Pick
 Dina Powell & Dave McCormick
 RBC Capital Markets
 Richman Family Foundation
 Garth Priber & Katey Riordan
 Rite Aid Foundation Kids
 Cents
 Alex & Amy Rotter
 Stephanie & Fred Shuman Family Foundation
 Adam & Melanie Smith
 David & Amy Sorkin
 Anil Stevens & Anita Krishnan
 Sunshine Foundation
 Vine Family Charitable Fund
 Roberta Watson
 William E. Weiss Foundation

Anonymous
 Nathan Z. Armour Foundation
 Vanessa & Damien Baque-Stanton
 Lloyd & Laura Blankfein
 Gretchen Buchenholz
 Carson Family Charitable Trust
 Estate of Ernest W. Dodd
 Pat & Mary Duff
 Frelinghuysen Foundation
 Joyce and Irving Goldman Family Foundation
 Suzan Gordon
 Karenna Gore
 Russell Grinnell Memorial Trust
 Jeff Horing
 Hyde & Watson Foundation
 Meredith Kane
 Kaufmann Foundation
 Estate of William Laggren
 Gregory Lee & Amanda Moretti
 Stephen & May Cavin Leeman Foundation
 Levy ImpAct Charitable Foundation
 Robert & Dana Lewin
 Anna Markus
 Henry & Laura McVey
 David & Miriam Phalen
 Edward & Betsey Pick
 Dina Powell & Dave McCormick
 RBC Capital Markets
 Richman Family Foundation
 Garth Priber & Katey Riordan
 Rite Aid Foundation Kids
 Cents
 Alex & Amy Rotter
 Stephanie & Fred Shuman Family Foundation
 Adam & Melanie Smith
 David & Amy Sorkin
 Anil Stevens & Anita Krishnan
 Sunshine Foundation
 Vine Family Charitable Fund
 Roberta Watson
 William E. Weiss Foundation

Anonymous
 Joshua Attie & Veronica Moo
 Sandra Atlas Bass & Edythe & Sol G. Atlas Fund
 The Barker Welfare Foundation
 Sandye Berger
 Todd & Karen Builione
 Webster & Debbie Chua
 Cleveland Foundation
 Cura Children's Foundation
 D and R Fund
 Robert & Robin Easton
 Michael Eberstadt & Nina Beattie
 Nicolaj Ejler
 Frieder Family Foundation
 Fund for Public Health
 Steve Gardner
 Gaylord Donnelley Charitable Lead Unitrust Trust
 Goldman Sachs & Co.
 Goldman-Sonnenfeldt Foundation
 Tim & Karen Goodell
 Hess Corporation
 Interval Partners LP
 Ian James
 Peter & Blanche Johnson
 JM Kaplan Fund
 Jacob & Elizabeth Kuit
 Paul LeGrendre
 Wesley & Evan LePatner
 Carl Loewenson, Jr. & Susan Brune
 L'Oreal USA
 Macy's
 Susie Mayer
 Jordan Muraskin & Izzie Lerer
 Lucian & Bernice Paone
 Edward & Dorothy Perkins Foundation
 Rifkind Family Foundation
 Ralph & Kim Rosenberg
 RPM Fund
 Art Scavone & Anne Hoyt
 Eric & Tracy Chutorian Semler
 Alfred & Stephanie Shuman
 Simplistic Foundation
 Spektor Family Foundation
 James & Lara Vitiello
 Scott & Linden Wise
 Don & Li Wu

Anonymous
 Joshua Attie & Veronica Moo
 Sandra Atlas Bass & Edythe & Sol G. Atlas Fund
 The Barker Welfare Foundation
 Sandye Berger
 Todd & Karen Builione
 Webster & Debbie Chua
 Cleveland Foundation
 Cura Children's Foundation
 D and R Fund
 Robert & Robin Easton
 Michael Eberstadt & Nina Beattie
 Nicolaj Ejler
 Frieder Family Foundation
 Fund for Public Health
 Steve Gardner
 Gaylord Donnelley Charitable Lead Unitrust Trust
 Goldman Sachs & Co.
 Goldman-Sonnenfeldt Foundation
 Tim & Karen Goodell
 Hess Corporation
 Interval Partners LP
 Ian James
 Peter & Blanche Johnson
 JM Kaplan Fund
 Jacob & Elizabeth Kuit
 Paul LeGrendre
 Wesley & Evan LePatner
 Carl Loewenson, Jr. & Susan Brune
 L'Oreal USA
 Macy's
 Susie Mayer
 Jordan Muraskin & Izzie Lerer
 Lucian & Bernice Paone
 Edward & Dorothy Perkins Foundation
 Rifkind Family Foundation
 Ralph & Kim Rosenberg
 RPM Fund
 Art Scavone & Anne Hoyt
 Eric & Tracy Chutorian Semler
 Alfred & Stephanie Shuman
 Simplistic Foundation
 Spektor Family Foundation
 James & Lara Vitiello
 Scott & Linden Wise
 Don & Li Wu

Anonymous
 Joshua Attie & Veronica Moo
 Sandra Atlas Bass & Edythe & Sol G. Atlas Fund
 The Barker Welfare Foundation
 Sandye Berger
 Todd & Karen Builione
 Webster & Debbie Chua
 Cleveland Foundation
 Cura Children's Foundation
 D and R Fund
 Robert & Robin Easton
 Michael Eberstadt & Nina Beattie
 Nicolaj Ejler
 Frieder Family Foundation
 Fund for Public Health
 Steve Gardner
 Gaylord Donnelley Charitable Lead Unitrust Trust
 Goldman Sachs & Co.
 Goldman-Sonnenfeldt Foundation
 Tim & Karen Goodell
 Hess Corporation
 Interval Partners LP
 Ian James
 Peter & Blanche Johnson
 JM Kaplan Fund
 Jacob & Elizabeth Kuit
 Paul LeGrendre
 Wesley & Evan LePatner
 Carl Loewenson, Jr. & Susan Brune
 L'Oreal USA
 Macy's
 Susie Mayer
 Jordan Muraskin & Izzie Lerer
 Lucian & Bernice Paone
 Edward & Dorothy Perkins Foundation
 Rifkind Family Foundation
 Ralph & Kim Rosenberg
 RPM Fund
 Art Scavone & Anne Hoyt
 Eric & Tracy Chutorian Semler
 Alfred & Stephanie Shuman
 Simplistic Foundation
 Spektor Family Foundation
 James & Lara Vitiello
 Scott & Linden Wise
 Don & Li Wu

Anonymous
 Joshua Attie & Veronica Moo
 Sandra Atlas Bass & Edythe & Sol G. Atlas Fund
 The Barker Welfare Foundation
 Sandye Berger
 Todd & Karen Builione
 Webster & Debbie Chua
 Cleveland Foundation
 Cura Children's Foundation
 D and R Fund
 Robert & Robin Easton
 Michael Eberstadt & Nina Beattie
 Nicolaj Ejler
 Frieder Family Foundation
 Fund for Public Health
 Steve Gardner
 Gaylord Donnelley Charitable Lead Unitrust Trust
 Goldman Sachs & Co.
 Goldman-Sonnenfeldt Foundation
 Tim & Karen Goodell
 Hess Corporation
 Interval Partners LP
 Ian James
 Peter & Blanche Johnson
 JM Kaplan Fund
 Jacob & Elizabeth Kuit
 Paul LeGrendre
 Wesley & Evan LePatner
 Carl Loewenson, Jr. & Susan Brune
 L'Oreal USA
 Macy's
 Susie Mayer
 Jordan Muraskin & Izzie Lerer
 Lucian & Bernice Paone
 Edward & Dorothy Perkins Foundation
 Rifkind Family Foundation
 Ralph & Kim Rosenberg
 RPM Fund
 Art Scavone & Anne Hoyt
 Eric & Tracy Chutorian Semler
 Alfred & Stephanie Shuman
 Simplistic Foundation
 Spektor Family Foundation
 James & Lara Vitiello
 Scott & Linden Wise
 Don & Li Wu

Anonymous
 Joshua Attie & Veronica Moo
 Sandra Atlas Bass & Edythe & Sol G. Atlas Fund
 The Barker Welfare Foundation
 Sandye Berger
 Todd & Karen Builione
 Webster & Debbie Chua
 Cleveland Foundation
 Cura Children's Foundation
 D and R Fund
 Robert & Robin Easton
 Michael Eberstadt & Nina Beattie
 Nicolaj Ejler
 Frieder Family Foundation
 Fund for Public Health
 Steve Gardner
 Gaylord Donnelley Charitable Lead Unitrust Trust
 Goldman Sachs & Co.
 Goldman-Sonnenfeldt Foundation
 Tim & Karen Goodell
 Hess Corporation
 Interval Partners LP
 Ian James
 Peter & Blanche Johnson
 JM Kaplan Fund
 Jacob & Elizabeth Kuit
 Paul LeGrendre
 Wesley & Evan LePatner
 Carl Loewenson, Jr. & Susan Brune
 L'Oreal USA
 Macy's
 Susie Mayer
 Jordan Muraskin & Izzie Lerer
 Lucian & Bernice Paone
 Edward & Dorothy Perkins Foundation
 Rifkind Family Foundation
 Ralph & Kim Rosenberg
 RPM Fund
 Art Scavone & Anne Hoyt
 Eric & Tracy Chutorian Semler
 Alfred & Stephanie Shuman
 Simplistic Foundation
 Spektor Family Foundation
 James & Lara Vitiello
 Scott & Linden Wise
 Don & Li Wu

Anonymous
 Joshua Attie & Veronica Moo
 Sandra Atlas Bass & Edythe & Sol G. Atlas Fund
 The Barker Welfare Foundation
 Sandye Berger
 Todd & Karen Builione
 Webster & Debbie Chua
 Cleveland Foundation
 Cura Children's Foundation
 D and R Fund
 Robert & Robin Easton
 Michael Eberstadt & Nina Beattie
 Nicolaj Ejler
 Frieder Family Foundation
 Fund for Public Health
 Steve Gardner
 Gaylord Donnelley Charitable Lead Unitrust Trust
 Goldman Sachs & Co.
 Goldman-Sonnenfeldt Foundation
 Tim & Karen Goodell
 Hess Corporation
 Interval Partners LP
 Ian James
 Peter & Blanche Johnson
 JM Kaplan Fund
 Jacob & Elizabeth Kuit
 Paul LeGrendre
 Wesley & Evan LePatner
 Carl Loewenson, Jr. & Susan Brune
 L'Oreal USA
 Macy's
 Susie Mayer
 Jordan Muraskin & Izzie Lerer
 Lucian & Bernice Paone
 Edward & Dorothy Perkins Foundation
 Rifkind Family Foundation
 Ralph & Kim Rosenberg
 RPM Fund
 Art Scavone & Anne Hoyt
 Eric & Tracy Chutorian Semler
 Alfred & Stephanie Shuman
 Simplistic Foundation
 Spektor Family Foundation
 James & Lara Vitiello
 Scott & Linden Wise
 Don & Li Wu

Anonymous
 Joshua Attie & Veronica Moo
 Sandra Atlas Bass & Edythe & Sol G. Atlas Fund
 The Barker Welfare Foundation
 Sandye Berger
 Todd & Karen Builione
 Webster & Debbie Chua
 Cleveland Foundation
 Cura Children's Foundation
 D and R Fund
 Robert & Robin Easton
 Michael Eberstadt & Nina Beattie
 Nicolaj Ejler
 Frieder Family Foundation
 Fund for Public Health
 Steve Gardner
 Gaylord Donnelley Charitable Lead Unitrust Trust
 Goldman Sachs & Co.
 Goldman-Sonnenfeldt Foundation
 Tim & Karen Goodell
 Hess Corporation
 Interval Partners LP
 Ian James
 Peter & Blanche Johnson
 JM Kaplan Fund
 Jacob & Elizabeth Kuit
 Paul LeGrendre
 Wesley & Evan LePatner
 Carl Loewenson, Jr. & Susan Brune
 L'Oreal USA
 Macy's
 Susie Mayer
 Jordan Muraskin & Izzie Lerer
 Lucian & Bernice Paone
 Edward & Dorothy Perkins Foundation
 Rifkind Family Foundation
 Ralph & Kim Rosenberg
 RPM Fund
 Art Scavone & Anne Hoyt
 Eric & Tracy Chutorian Semler
 Alfred & Stephanie Shuman
 Simplistic Foundation
 Spektor Family Foundation
 James & Lara Vitiello
 Scott & Linden Wise
 Don & Li Wu

Sponsors

ABR Plumbing and Heating Contractors
 Christopher Acito & Jaleh Amouzegar
 Ades Family Charitable Fund
 Almod Diamonds Ltd.

Protectors

Ted Alt & Katherine Burke

| | | | |
|--------------------------------------|---------------------------------------|---|--|
| Angelson Family Foundation | Cynthia Kern | Fern & Lenard Tessler | April Eismont |
| Anonymous | Mohamad Khaled | Chris Thompson | Johanna Flaum |
| Anonymous | Rich & Marianne Kreider | Thomson Reuters | Jared Franken |
| Apple, Inc. | Patricia Krushel | Frank Tull | Katherine & Elizabeth Freedman |
| Gina Argento | John Kim & Sara Song | Mary Ellen Vachris | Enrique & Terry Garcia |
| Michelle Awuku-Tatum & Stanley Tatum | Michael & Debra Kushma | Mandana Vahabzadeh | Michael Gilsean |
| Madeline & Walter Bard | La Vid Verdadera | Steven & Gail Viener | Bennett & Marcy Grau |
| Baird Foundation | James & Celia Lang | Veronica & Michael Von Wiebner | Richard Greenspan & Rachel Ratner |
| Evan & Dina Bakst | Joshua Larocca | SW Contracting and Consulting | Megan Gregory |
| Seymour Barofsky | James Lee | Svetlana & Herbert Wachtell Foundation | Douglas & Ann Grissom |
| Garret Batten & Allison Lomanaco | Jeff Levick & Katherine Karet | Sean Ward | Sumati Gupta & Vikas Agrawal |
| Linda Bell | Elizabeth Lindemann | Walt Disney Company Foundation | John & Joanne Heavey |
| Hannah Bernard | Lone Pine Foundation | Michael Wasserman | Kate & Sam Holliday |
| Jordan & Lauren Bettman | Bremond MacDougall | Eli Weinberg & Stephanie Jillian | High Net Worth Advisory Group |
| Blake Family Fund | Tara Maitra | Whole Foods | Gregory Ho & Linda Sanchez |
| Bloomberg | Joe Marchese | Caroline Williams | Mr. & Mrs. Felipe Jordao |
| Bridget & Robert Bories | Tom & Jill Marino | Matthew Williams & Maribel Ledezma-Williams | Alexis Kaback |
| James & Miriam Broner | Scott Marion | | David Kaback & Stephanie Apt |
| C Community | Matching Fund | Union Settlement Association | David Kaufman |
| John & Elizabeth Caflich | Mayor's Fund to Advance New York City | Mahnaz Zahedi | Gordon & Susan Kaye |
| Anthony Cesare | Justin McBride & Jessica Baltera | Debbie Zeligson | Jennifer Laino |
| Edward Chen | | David Zippel-Michael Johnston Charitable Fund | Robert & Raegan Lange |
| Lisa Cintron & Ezra Borut | McDermott Will & Emery | | Gerald Laurain |
| Steven & Christine Codispoti | Sonia Mehta | Defenders | Michael Lewis & Eri Noguchi |
| David & Lesa Cohen | Rudy & Jillian Mercado | Nicole Allen & Alexander Merkle | Local Independent Charities of America |
| Lindsey Conley | Mount Sinai Hospital | Anonymous | Grace R. & Alan D. Marcus Foundation |
| Ross Devor | Emergency Department | Aon | Alan & Barbara Marks |
| Honorable David & Joyce Dinkins | Jennifer Pace | Patricia Barrett | Nicholas Martin |
| Robert & Mary Ann Downes | Keith Palzer & Anita Kawatra | Richard & Ilene Barth | Amy Miller |
| EisnerAmper LLP | Mandy Patinkin & Kathryn Grody | Shrujal Baxi | Saul & Julie Morgenstern |
| Stephanie Erceg & Louis Filippelli | William & Carolyn Patterson | Richard & Diana Beattie | Myers Family |
| John Faldetta | PayPal Giving Fund | Robert Bender & Loretta Nash | Lisa Nadler & Masahiro Yamazaki |
| Charles Fletcher | James S. Peterson Foundation | Garrett Berg | Aaron Nagano & Siran Tanielyan |
| Honorable Helen & Henry Freedman | Abraham Polinsky | Sarab Bhutani | Neel Foundation |
| | Jefrey Pollock & Deborah Brown | Kristin Boyer | Shigeru & Shoko Noguchi |
| Greg Geronemus & Katherine Pier | David & Alyssa Portny | Micah & Leigh Brill | Niall O'Murchadha |
| Glickenhau Foundation | Brosnan Risk Consultants | Alexander Buzik | NY Cares |
| Loic Gouzer | Christopher Buchenholz & Janie Deegan | Elizabeth & Andrew Byington | Peter & Helen Pachios |
| Graham Holdings Company | Lauren & Robert Bugbee | Jeff Cady | Steven Perrotta |
| Greenbush Gift Fund | Joann Riggio | Scot & Ulka Campbell | Michael & Sarah Phillips |
| Monika Grzanka | Steven & Maria Rosenthal | Citizens Committee for New York City | Alden Finch Prouty |
| Monika Grzanka | Patrick & Renee Ryan | Patrick Clarke | Barry & MJ Ross |
| Judy & Jack Hadlock | Douglas & Patty Sacks | Neil Costa & Lynn Ahrens | David & Elizabeth Saltzman |
| Todd Halky | Stephen & Susan Scherr | Robert Cox & Annie Hartenstein | Marsha & Jay Seeman |
| Joshua & Abigail Helfat | Stephen & Susan Scherr | Colin Crawford | Amanda Severeid |
| Stephen Hixon | Tony Schwartz & Deborah Pines | Elizabeth & Derek Cribbs | Fernanda and Chase Sheridan |
| Corey & Sarah Hopper | Marion Seltzer | Brian Criswell | Kara Siegel |
| Gary Horowitz & Marcy Wachtel | Ashish Shah | Olga Czabaj-Shetty | Russell Silverman & Jarah Peters |
| RJ Hutton Charitable Trust | Glenn & Nicole Shapiro | Davidson Kempner Capital Management | Snyder Family |
| Aryaman Jalota | Marc & Susan Sholinsky | Gary DiMauro | John & Kim Snyder |
| Jim Johnson | Alexander & Jamie Silver | Martin & Jacqueline Eisen | Jayne Sprayregen |
| Leslie Johnson | Amy Stuart | | Rose Styron |
| JP Morgan Chase | Tom & Phoebe Styron | | Margaret Sullivan |
| Adina Kagan | Dermot & Jennifer Sullivan | | |
| Michael & Sandra Kamen | Stephen Sweetland | | |
| Carol Kane | Susan Tanaka & Lewis Alexander | | |
| Matthew Kaplan | | | |

| | | | |
|--------------------------------|-----------------------------------|-----------------------------------|------------------------------------|
| William Susman & Emily Glasser | Marion Borko | Laurie Davis | Alissa Gargano |
| Nancy Sweedler | Rachel Borkowski | Marlene Debel | Donna Gargano |
| Elizabeth Swindell | Marissa Boss | William Deringer | Aurora Gatch |
| Tova & Diego Syrowicz | Katie Bossie | Designs that Donate | Melani Geiger |
| Alex Vourlidis | Elise & Craig Boyan | Deutsche Bank Americas Foundation | Katherine Gendron |
| Jamie Watson | Brian Boye | Tony & Michelle DeVito | Jeannine Giacobelli-Mazzeo |
| Barbara Weisz | Alatia Bradley | Ellyce Di Paola | Margaret Gifford |
| Tom Wells & Lee Tannen | Jeff & Emily Bradley | Margaret Diaz-Cruz | Gilead |
| Candice West | Julie Brandes | Spencer Dickman | Roger Gindi & Gregory Victor |
| Mary Wiener | Erik Braund | Michael Digiuseppe | Arlene Glantz |
| Bob & Linda Wosczyk | Kaitlin Brazill | Nimish Dixit | Bradley Glick |
| Peter & Michelle Wu-Buchenholz | Anne Brennan | Greg Dixon | Global Strategy Group |
| Jeremy Yashar | Stuart Breslow & Anne Miller | The Democracy | Steven & Judy Gluckstern |
| Supporters | Aleisha Brimon | Edward Donohue | Pam Goldberg |
| Lila Abu-Lughod | William Brown | Elizabeth & Eric Einhart | Stefanie & Andrew Goldenberg |
| Madelyn Adamson | Eliza Browning | Embody Wellness Company | Jane Goldstein |
| Jeremy Adler & Bridget Mueller | Greyson & Katie Bryan | Evelyn Enciso | Donald Goodson & Carolyn Vine |
| Aircall | Dawn Buchenholz | Diana Eng | Google Matching Gifts |
| Fran Alexander | George Bunch | EPM Consulting Group | Alice & Jim Gordon |
| Brooke Allen | Susan Bunda | Courtney Esteves | Wendy Grabel |
| Ronald Allison | George & Elizabeth Burns | John Evans & Elaine Dimopoulos | Ethan Gracer |
| David & Anne Altchek | Yuki & Horace Bush | Fairbairn Family | Patricia Grassi |
| Amazon Smile | Jonathan & Talia Butwin | Melissa Farber | Grassl Family |
| American Family Insurance | Thomas & Elizabeth Caine | Michael Faridi | Daniel Greene |
| Dreams Foundation | Casper Caldarola | Ghulam Fatima | Yee Wah Gregoire |
| Manish Amin | Margaret Camacho | Richard & Toni Feinbloom | Mary Beth Grey |
| Daniel & Joan Amory | Dawn Camner | Brent Felitto | Jennifer Griffin |
| Michael Angelon | Judith Campbell | Greg Feller & Richard Bodin | Michael Griffin |
| Fabiola & Abasi Aniton | Matt Carroll | Paul Feuerstein & Rebecca Eddy | Errol Griffiths & Joan Nealon |
| Anonymous | Pranav Chawla | Final Cut USA | Jennifer Grogan |
| Mark Aronson | David Cheever | Janice Fiscina | Jeanette Guillen-Morin |
| Lisa Attea | Margaret Cheever | Graeme Fleckney & Jill Monum | Allison & Drew Gutstein |
| Matthew Augen | Corinne Chmielewski & Jason Boyle | Ruth Fleischmann | Abbe Haber |
| Kristen Avery | Christina Choi Cosmetics | Keith Fogerty | David Hale |
| Richard Avolanti | Erica Choi | Patty Fogerty | William Hamrick |
| Sarkaw Aziz | Jacqueline Chu | William Forbath | Christopher Hanson |
| Fernanda Bak & Danie Passy | Jean Chu | Daniel Forman | Evan Harrel & Laura Berland |
| Peter Bakst | Jason Chuon | Thomas Forter | Colin Harrington |
| Suzanne & Kenneth Bakst | Nancy Clark | Ann Marie Foss | Alex Harris |
| Brett Barakett | Amy Clayton | Claire Fowler & Michael Lapp | Nancy E. Harris |
| Joanne Barclay | Kathryn Clubb | Hilary Frankel | Roseanne Harris |
| Scott & Michelle Barishaw | Amy Cohen | J. Dermot Frengley | Yvette Harrison |
| Connie Barrett | Bob & Barbara Cohen | Erica & David Friedman | Amy Haruyama |
| John Bauers | Michael & Arleen Cohen | Tara Friedman | Brian & Stacey Haskel |
| Steven Bell & Marie Nguyen | Douglas Cohn | Kendall Frost | Ken & Kristen Hawkins |
| Jonas Bender-Nash | Orla Coleman | Steven Fuchs | Annie Hayes |
| Katie Bergin | Ann Colley | Thomas Fulgione | Brian & Kim Heavey |
| Maura Berkelhamer | Lindsey Collins | David & Gail Furman | Michael Heavey |
| Brian Berman | Peter Corrigan | Kate & Mike Futia | Linda Heller |
| Bonnie Bernard | Wendy Cortes | Allyson Galishoff | Jane Henderson |
| Carolyn Jennifer Bernstein | Dana Cortez | Caitlin Gallagher | Kevin Henry & Michael Lappin |
| Onima Bhuchar | Anna Cosme | Lauren Gallagher | Victor Henschel & Judith Samuelson |
| Mina & William Black | Eileen Costigan | Jacob Gamerman | Judith Hill |
| Alixandra Blackman | Allen Coulter & Kim Knowlton | Christine Gardner | Sally Hinton |
| Claudia Blandi | Erik & Emma Crepeau | Jane Gardner | Richard & Fran Hofstetter |
| Eda Blauner | Theresa Cutillo-Schmitter | Maddie Gardner | Tom Hogan |
| Karyn Bloom | Todd & Sara Dashefsky | Caroline Gardner-Williams | David Hom |
| Donya Bommer | Phoebe Davis | | Ellen Horovitz |

| | | | |
|--------------------------------|---------------------------------|---------------------------|---|
| Danny & Janice Horowitz | Michael LeFante | Emily Miles | Kelly Purcell |
| Andrew Hove | Sharon Leshetz | Nadia Minchella-Griebsch | Miriam Raisner & Nathaniel Catez |
| Paul Howard & Sheryl Benjamin | Jodi Wechter Levy | Samuilia Mincheva | Shruti Raju & Josh Laurito |
| David Howell | Lauren Lewis | Valerie Schaer Mirels | Melissa Rapoport |
| Stephanie Hubbell | Richard & Carol Lewis | Monday Properties | Brooke Rascoff |
| Sharon & Andrew Hubregsen | Michelle Lewis-Wijesinghe | Rachel Mooney | Sarah Rebar |
| Kevin Hungate | Xiaotong Li | Elizabeth Moore | Michelle Rest |
| Karim Hutson & Luz E. Gandulla | Nancy Lipmann | Berta Mora | Carrie & Steve Revell |
| IBM Employee Giving | Lisa Litwin | Tara Mora & Doug Beebe | Bill Rex |
| James Incognito | Teale Long | Jenna & Peter Morgenstern | Shanpei Ri |
| Yoshiko & Yoshimi Inoue | Mike Longo | Julie Mork | Kelly Ritch |
| Anne Isaak | Cristian & Barbara Lopez-Balboa | Daisy Mui | Julia Ritchie |
| Andrew & Ellen Jacknain | Ileana Lopez-Balboa | Anna Nachamie | Jose Rivera |
| Christopher Jackson | Nancy & Enrique Lopez-Balboa | Edir Nadler | Lizette Rivera |
| Josanne Jackson | Olivia Lopez-Balboa | Kathleen Napolitano | Marcia Rivkin |
| Richard & Marianne Jackson | Alexandra Lourenco | Samuel Nassi | Ajani Robinson & Dominique Bratton |
| Tobias Jackson | Jessica Luck & Joseph Castillo | Joshua & Andrea Nathan | Gary Robbins |
| Morgan & William Janela | Peter Luftig | Sidy Ndiaye | Catherine Rocco |
| Sarah Jarkow | Scott Luftig | New York City Gives | Thomas Rockafeller |
| Brittany Johns | Alaina Lynch | Hannah Neznak | Carolynn Rockafellow & Francisco Lopez-Balboa |
| Chad Johnson | Arielle & Ian Madover | Bill & Cindy Nibur | Robin Rockafellow |
| Colin Johnson | Jacqueline Madrigal | Brigitte Noh | Sylvia Rogers |
| Nancy & Jeff Johnson | Jacqueline Madrigal | Dimitri Nouveau | Robert Rosen |
| The Jordan Company | Tiana Malacas | Karen Noy | Sadoff Family |
| Jennifer Jung | Noel & Grace Mangan | Diana O'Brien | Eliza Saint Fleur |
| Lore Kann Foundation | Lisa Manne | Vanessa O'Connell | Henry & Mary Ellen Sampson |
| Theodore & Susan Kanellakis | Danny Manning | Deirdre O'Connor | Ord Sarabanchong |
| Randy Kaplan | Janine Manolacos | Fiona O'Doherty | Christine Schloder |
| Evelyn Karet | Elizabeth Mansueti | Kathleen O'Donovan | Sabina Schlumberger |
| Laura Karet | Jason Manteiga | Ellen Oppenheim | Sara & Richard Schlusell |
| Elizabeth Kass | Barbara Marino | Ellen Oppenheim | Peter Schmuki |
| Audrey Katz | John Marmora | Seth Orbach & Ann Klotz | Stephen & Sylvia Schoenbaum |
| Elizabeth Keane | Paul Marmora | Adriana Pace | Kim Schwaab |
| Ami Keene | Lea & Ferg Marmora | Dominick Pace | Peggy Schwartz |
| Steven Keller | Virginia Marmora | Reg & Gail Paige | Kimberly Seluga & Steve Zhu |
| Kennish Family | Patricia Marshall | Michael & Tara Pantaleno | Alison Serino |
| Shaun Kiedrowski | Antonio Masi | John & Mary Paone | Joseph & Marie Serra |
| Minji Kim | Jo & Tyler Mathisen | Dipen Patel | Jamie Shedrofsky |
| Dina Klein | Chris & Christina Mattern | Jiten Patel | Ted & Mary Jo Shen |
| Anna Klufas | Chris & Christina Mattern | Robert Patton | Alexandra Shum |
| David Konciak | Rita Maxwell & Ryan Kane | Robert Patton | Heidi Siegel |
| Anna Kramarsky | Rita Maxwell & Ryan Kane | Robert Patton | Susan Silberberg |
| Robin Kranich | Rita Maxwell & Ryan Kane | Robert Patton | Melissa Silvestri |
| Arun Krishnamurthy | Rita Maxwell & Ryan Kane | Robert Patton | Bliss Siman |
| Yukiko Kubo | Rita Maxwell & Ryan Kane | Robert Patton | Andrew & Caitlin Simon |
| Rachel Kui & Brandon Tung | Rita Maxwell & Ryan Kane | Robert Patton | Theresa Pellegrino Simon |
| Ted & Pam Lacey | Rita Maxwell & Ryan Kane | Robert Patton | Jessica Simonoff |
| Rose Lapp | Rita Maxwell & Ryan Kane | Robert Patton | Ashley Slater |
| Joseph LaVela | Rita Maxwell & Ryan Kane | Robert Patton | Deb Slough |
| Karen Lavine | Rita Maxwell & Ryan Kane | Robert Patton | Parrish Smith |
| Stephanie Lawrence | Rita Maxwell & Ryan Kane | Robert Patton | Donna Smythe |
| Benjamin Lawsky & Jessica Roth | Rita Maxwell & Ryan Kane | Robert Patton | Diane Sonde & Larry O'Neill |
| Lazard Foundation | Rita Maxwell & Ryan Kane | Robert Patton | Chang Spaide |
| Matthew Lazarus | Rita Maxwell & Ryan Kane | Robert Patton | Peter Smith & Diana Holic |
| Allison Le & Paul Molina | Rita Maxwell & Ryan Kane | Robert Patton | Rick Smolan |
| David Lebowitz | Rita Maxwell & Ryan Kane | Robert Patton | Carrie Spero |
| Jon Lechliter | Rita Maxwell & Ryan Kane | Robert Patton | |
| Christopher & Hae-yeon Lee | Rita Maxwell & Ryan Kane | Robert Patton | |

| | | | |
|-----------------------------|--------------------------------|----------------------------|------------------------------------|
| St. Malachy Catholic Church | Andrew Wilson | Alana Barlia | Melissa Butler |
| Scott Stackman | Kate Wise | Talene Baroyan | Sue Calantine |
| Marisa Stavenas | Ashley Wolitzer | Ana Barreiros | Kate Calihan |
| Aly Stein | Walter Wolleman | Jessica & Jonathan Barreto | Jared Campbell |
| Mitchell Stein | Miranda Wollen | Emma Barrett | Drew Cancelliere |
| Therese Steiner | Chun Fai Wong | Irene Barrett | Victoria Cappucci |
| Philip & Fallon Storage | Carrie Wright | Hilary Barroga | Jennifer Carlson |
| Meghan Stricker | Stephen Wright | Maureen Barry | Jessica Casanova |
| Leda Strong | Angela Wu | Jack Barton | Fabiana Castelli |
| Hanna Stubblefield-Tave | Yvette-Michelle Wynn | Hayley Batson | Isabella Castellon |
| Chan & Ruth Suh | Phyllis and Calvin Yee | Emma Baxter | Shayonna Cato |
| Kathryn Susik | Kibra Yohannes | Sheila Be | Hannah Chabot |
| Lee Tannen & Tom Wells | Spencer Young | Bobby Beard | Michael Chang & Shauna Dixon-Chang |
| Miyaki Tate-Heaven | Chris & Trish Yula | Sofie Belkin-Sessler | Hannah Cheever |
| Robert Taylor | Carleigh Zelman | Ahmed Ben Aissa | Hope Chen |
| Roxanne Taylor | | Ashley Benner | Joyce Chien |
| Julie Teich | Friends | Elmer Berbano | Angela Chiraz |
| Mark Tiberio | Steffani Aarons | Barbara Berg | Amani Choudhury |
| Felix Tollinche | Daniel Abelson | Ellery Berk | Shaan Chugh |
| Keenan Tomlinson | Sam Abrams | Ellen Berkelhamer | Frank & Maria Ciaravalli |
| Trevor Tomlinson | Eric Ackland | Elizabeth Berkelhamer | Vasa Clarke |
| Paul Trent | Mary Adams | Tony Berkman | Lauren Cline |
| Michael Tripp | Ronnie Adams | Thria Bernabe | Caroline Cochran |
| Steve Tripi & Laura Venuto | Anissa Adas | Bradley Bernard | John Codman III |
| Tripps Family | Gary Adkins | Alec Berry | Olivia Cohen |
| Angie Tseng | Jill Adley | Dylan Biben | Sasha Cohen |
| Yang Tu | Rafita Ahlam | Anthony Biggs | John Coleman |
| Katherine Turner | Louise Ahmann | John Binney | Rebecca Collins |
| James Tyre | Shama & Michael Ahuja | Whitney Birdsall | Alexis Comrack |
| UK Online Giving Foundation | Sara Airasian | Susan Bishop | Mia Corbett |
| Suzanne Van de Raadt | Yasmine Alhammadi | Keith Bitely | Janel Corney |
| Pim van Schie | Elisa Albella | Barbara Black | George Cotayo |
| Lisa Vandivort | Morgan Alexander | Kate Blaylock | Loretta Courtney |
| Matthew Vandivort | Colby Alfieri | John Blizzard | Erin Cowles |
| Shanu Varghese | William C. Allison IV | Maddy Blumen | Robert Cox |
| Niketh Velamoor | Eliane Almeida & Marcos Amino | Stephen Bogardus | Susan Cramer |
| Susie Velasquez | Kimiya Alsop | Dalyn Booker | Eli Jacob Alexander Crane |
| Mark Vershbow | Sean Amby | Ebony Boone | Rosemary Criste-Baldwin |
| Jeannine Villella | Maggie Andrew & George Edwards | Heidi Bota | Londyn Crowder-Maree |
| Stephen & Barbara Vine | Julie Andrews | Maureen Bowen | Deja Culpepper |
| Nancy Virdi & Anurag Poddar | Amelia Annen | Nora Bradley | Sarah Cunningham |
| Lina Vishnevsky-Tropp | Anonymous | Melanie Brandabur | Dylan Curry |
| James Walker | Anita Anthonj | Katie Brennan | Miles Curry |
| Julia Walker | Cody Anthony | Camryn Brescia | Richard Curry |
| Natalee Walker-Henry | Josh Apfel | Barbara Brewer | Ann Marie Czerniuk |
| Eric Walters | Jack Armstrong | Stuart Brewer | Salvatore D'Amico |
| Valerie Warner | Carmen Ascanio | Johnnie Briles | Carlos Da Silva |
| Andrew & Jody Watermeyer | Dana Ash | Michael Bromley | Soham Daga |
| Thomas Weber | Gillian Marie Atienza | Sam Broner | Emmie Danza |
| Pam Weisz | Wendy Avon | Cynthia Brosque | Mary Dapello |
| Faye Weitzman | Susan Baer | Mary Brown | Jeffrey Darden |
| Rachael Wells | Sheila Bailey | Peter Brown | Krystle DaSilva |
| Bruno Welt | Tricia Bailey | Tiffanie Brown | Elizabeth Davis |
| Rich Wesolowski | Emily Bakst | Rachel Bryan | Marie O'Brien Davis |
| Lee Wexler | Talia Bakst | Edgardo Bueser | Brian Day |
| Joan Wiener | Randi Balaban | Benjamin Bullock | Catherine Dean |
| Derick & Natalie Wilkes | Julia Baldino | Leslie Burg | Madeline Dean |
| Michele Willens | Alan Baldwin | Marsi Burns | Riva Touger Decker |
| Ismee Williams | Krystal Ballard | Jim & Kate Butler | |

| | | | | | | | |
|----------------------------|----------------------------|------------------------------|-----------------------------|-------------------------|-----------------------|--------------------------|---------------------------|
| Lane Decordova | Lisa Gemmel | Cheryl Hoch | Margo Kornfeld | Mallory Matson | Makenzie Nohr | Kazuko Raducanu | Scott Family |
| David Degan | Jessica Genter | Amanda Hoffmann | Blake Kortye | Regina Matthews | Nick Nowalk | Lisa Rafanelli | Lauren Scully |
| Amir Dehghan | Erika Germano | Rachel Holtz | Sara Kotcher | Kelly McCabe | Erin O'Brien | Radaisy Ramirez | Katherine Sebastian |
| Jaime del Castillo | Steve Gibson | Sandy & Judy Holtzman | Allison Kram | Sean McDermott | Catherine O'Donovan | Lisandra Ramos | Dillon Sebastian |
| Robert Delsite | Eileen Gibson | Dee Hoty | Sam Krickellas | Mia McDonald | Jeanne O'Regan | Dom & Audrey Ranieri | Summer Secrest |
| Gracie Delsohn | Gabrielle Giessen | Emily Howard | Kimberly Kriger | Robb McDougale | Katherine Ochs | Nevila Rasha | Eve Seiter |
| Jessica Demler | Jamie Giglio | Meg Hrinkevich | Nancy Kuhn | Frances McGoldrick | Christine Oehler | Alexia Raucci | Derek Self |
| Lucia Deng | Andres Gil | Katherine Huggins | Kendra Kumor | Emma McGrath | Doris Ofori | Tarri Reaves | Ecem Senyuva |
| Jamie Deroy | Sarah Giles | Elizabeth Hulton | Susan Kupferberg | Reymundo McKenna III | Alexandre Oleon | Julia Reger | Cosmin Serban |
| Tyler Desire | Lauren Gilman | Kristen Hutton | Kara Kutner | Sabra McKenzie-Hamilton | Oluwaseyi Olojo | Reyes Reyes | Emily Serwer |
| Margaret Devany | Sasha Gillman | John Hynes | Jimmy Laguatan | Ed McLaughlin | Jennifer Olson | Jacqueline Richard | Kavya Shankar |
| Anne Devine | Lisa Gioia | ICF | Jennifer Lake | Dale McNeill | Laurie & Steve Olson | Tammi Richards | Roopa Shankar |
| Mary Diaz | Malinda & Eddie Goldberger | Allison Immergut | Dave Landau | Tom & Mildred McNeill | Kelly Olvany | Jennifer Richardson | Blaire Sharman |
| Paige Dillon | Edward Goldman | Rhona Jacobs | Alex Laplaza | Caitlin McSherry | Meredith Oppenheim | Gillian Richter | Stevie Sharp |
| Elaine Dinerman | Sara Goldman | Meena Jacon | Caitlyn Latshaw | Kelly McWilliams | Adrian Sanchez Orozco | Genna Ricotta | Jessica & Cullen Shaw |
| Rachel Disalvo | Rebecca Goldstein | Trishna Jalan & Rahul Poddar | Glenn Latshaw | Gabi Melchior | Sherry Ortner | Sara Ringel | Evelyn Sheehan |
| Brenda Dix | Sam Golino | Han Jang | Cheryl Lauder | Aly Melchor | Sandra Osse | Nicole & Edward Risener | Sam Sheffer |
| Peter Dolan | Davionne Gooden | Joshua Javier | Denise Laurinaitis | Daniel Melendez | Otaku Update | Javier Rivas | Maureen Shelton |
| Bill Dong | Laura Goodfriend | Madeleine Jennewein | Nina Lavin | Valerie Melendez | Carla Pacini | Jenna Rizzo | Monica Sherer |
| Gregor Donnelly | Zeb Goodman | Dana Jensen | Janet Lawrence | David Mendelsohn | Kristen Padilla | Daniel Roberts | Katherine Shifke |
| Zach Dooley | Sandie Goodwin | Sarah Jerome | Lynn Lazar | Mahalya Mendez | Jillian Pagliocca | Karen Roberts | Dianne Siegelbaum |
| Daniel & Susan Drake | Nancy Goslee | Eartha Jean Baptiste | Claudia Lazo | Gretell Merlo | Paige Family | Roni Robinson | Brian & Elizabeth Silbert |
| Alex Dripchak | Randy Graff | Matthew Johns | Lina Le | Cathy Messing | Redesign Health | Olivia Rocklin | Wendy Silver |
| Louisa Dub | Jordan Granath | James D. Johnson | Justin Lee | Robin Messing | Reginald Paige | Martha Arcila Rodriguez | Irina Silver-Frankel |
| Ian Dugan | Nolan Green | Josephine Johnson | Nathalie Lelogeais | Matthew Meyerwitz | Stephanie Pak | Diane Rollins | Alexandra Sirianni |
| Claire Duggan | Harrison Greenberg | Ted Johnson | Diane Lent-Tucker | Microsoft | Ryan Palsho | Ana Roman | Lindsey Slaby |
| Jemuel Kyle Duyanen | Phyllis Greenwald | Veronica Felicity Johnson | Brooke Leonardi | Kevin Miller | Anuj Pandya | Jose Roman | Zachary Slater |
| Laurie Early | Chloe Greisman | Amy Jones | Sharon Leshetz | Heidi Miksin | Kate Pantano | Rachel Rosen | Becky Smith |
| Ellen Ebner | Randy Gross | Annah Jones | Maddison Levine | Estelle Mitchell | Judy Park | Vanessa Rosenthal | Bianca Smith |
| Anthony Edwards | William Gruen | Danielle Jones | Jamie Levitt | Justine Mitchell | Sejin Park | Carrie Ross | Charlotte Smith |
| Tom Edwards | Basak & Jim Gucciardo | Kyle Jones | Laine Levret de Melo | Marc Montaldo | Darrah Parker | Gloria Rothenberg | Savaannah Smith |
| Brian Egan | Judy Guhring | Ira Josephs | Tracey Li | Sarah Montes | Noah Parson | Madi Rothenberg | Daniel Sokolov |
| Reshma Eggleston | Erin Guiltinan | JamiLynn Joyce | Gatt Lindsey | Bobby Moore | Kush Patel | Chelsea Russo | Matt Spangler |
| Lauren Ellis | Dajie Guo | Suzie Jung | Tamara Litt | Brionne Moore | Mika Patton | Nicole & Matthew Ryan | Avery Spatt |
| Donna Esposito | Doranelie Gutierres | Michelle Kalb | Jerry Litwin | Megan Moore | Rosemary Paulson | Alfred Salerno | Marissa Speno |
| Matthew Evan | Meghan Hadlock | Marjorie Kalman-Kutz | Mark Anthony Lovelace | Eliana Morales | Howard Payne | Salimbene Family | Lamar & Ellen Spradley |
| John Facey | Kevin Hageman | Twyla Kantor | Nancy Lu | Joseph & Anita Moran | Taylor Pearson | Ted Saltz | Barbara Staffen |
| Yerania Febus | Thomas Hagenah | Leslie Kaplan | Jade Luo | Mary Moran | Fanny Pereire | Kayvon Samadani | Helene Stavis |
| Hannah Fein | Kaisha Haig | Aaron Kappe | Sue Luskin | Jaime & Susan Moreno | Stephanie Perry | Nuala Sanchez | Nadia Steffan |
| Steven Fein & Wendy Penner | Alexander Hails | Kate Karwelies | Joseph Lynch | Alex Moritz | Clara Pescetto | Marissa Sandelier | Rachael Steiger |
| Suzanne Ferencik | Chris Hall | Samandar Kasimov | Barbara Lyne | Christopher Morucci | Morgan Petrovich | Berto Sandoval | David Stein |
| Gabby Fisher | Violet Hall | Amelia Kassing | Olga Lynn | Jessica Mount | Nicole Philip | Ken Sang | Rachel Stein |
| Michaela Flatley | William Hamrick | Katherine Kaye | Lorraine Ma | Maria Moxon | Mary Piantadosi | Lawrence Sang | Irene Sterquelle |
| Kirsten Flicker | Jeffrey Hantover | Chrissy Keliher | Marina Ma | Shamiso Mtangi | Gabrielle Picard | Dahlia Santos | Heather Stickle |
| Rebecca Folkerts | Danielle Harris | Ian Kennedy | Ankica Maddux | Kerri Mulqueen | Alex Picarillo | Rachel Sarnoff | Norman Storer |
| Grace Fong-Smith | Catherine Hassert | Janelle Kennedy | Jak Magaud | Stefan Murat | Roger Piper | Surapee Sartrapai | Jim Sturgeon |
| Chloe Forcier | Gillian Hassert | Ashley Kera | Chris Magdall | Debbie Murawa | Bridget Plante | Brian & Stacy Sathe | John Sullivan |
| Albert Ford | Chris Haughey | Kerry Karangelen | Megan Mahoney | Michaela Murphy | Stephen Polizzi | Alison Savary | Paty Susana |
| Jerry & Sally Frank | Lisa Hauptman | Mindy Kerman | Mercer Malakoff | Grace Murray | Isaac Pollan | Danielle Sawtelle | Brian & Diane Sutherland |
| Amanda Frey | Becky Healey | Julie Kessler | Yohanna Maldonado | Sheri Mussar | Ben Polsky | Tom Scheifler | Sheila Suzara |
| Joshua Friend | Helix Co. | Rebecca Khandpur | Ariel Mankes & Joshua Fetto | Carsten Nahum | Cynthia Poon | Cecilia Schiavoni | Audrey Symes |
| Alexa Frost | Adam Heller | Rahul Khanna | Tiffany Maristany | Durelle Napier | Lewis Porter | Christine Schlumberger | Abigail Tabak |
| Ben Frost | Julia Heller | Hyewon Kim | Amy Marmora | Aidan Needle | Barbara Power | Roberta Schmidt | Joshua Taliaferro |
| Joanna Fu | Madeleine Hemphill | Katherine Kim | Chris Marmora | Jamie Neikrie | Anthony Pratofiorito | Rikki Schneider | Joshua Tam |
| Kiana Fukuyama | Tammy Hepps | Kara King | Joseph Marmora | Kate Neisloss | Blaire Preiss | Nadine Schnell | Dennis Tanjeloff |
| Mary Brooks Gallagher | Ira Herman | JeCeka Kitami | Yissel Martinez | Ken & Jane Newman | Faye Prewitt | Kevin Schofield | Meredith Tapper |
| Rose Galluzzo | Holly Hermes | Donna Klassen | Annalisa Martini | Gordon Ng | Savannah Price | Rachel Schorr | Nancy Tarlin |
| Sofia Garces | Stacey Herring | Georgie Koepke | Marymount School | Ty Lynn Nguyen | Jane Providenti | Ali Schulz | Tarnish-Me-Not LLC |
| Christine Gartland | MaryHugh Hill | Kyle Kogan | Nina Mascheroni | Rebecca Niccols | Alicia Qian | Alex Schwartz | Catherine Tatge |
| Paul Gay | Michelle Hines | Max Kolone | Elaine Maskus | Carmen Nieves | Fabiola Quinzanos | Heather Schwartz | Eleanor Taylor |
| Elizabeth Gemdjian | Mariana Hinojosa | Kathy Koo | Rudis Mata | Vishan Nigam | Paola Quiroga | Rebecca & Eran Schweiger | Timothy Taylor |

Rachel Tedrake
Antonio Teixeira
Katia Teran
Christina Tetteh
Amy Thind
William Tiberio
Julia Timerman
Christine Tiwari
Alex Tolerico
Robert Tomlinson
Mark Treese
Michelle Tricamo & Chad Lazar
Arlene Tropp
Maxim Tsireskin
Emma Tucher
Andra Turner
Savannah Turner
Conor Twohy
Brett Tyler
Tori Van Amson
Rosana Vantuyl
Maria Vasconcelos
Frank Vatuna
Max Vaupen
Benny Velasquez
Devri Velasquez
Bob Vella
Rosanna Veltri
Joseph Venticinque
Karunya Venugopal
Sara Victor
Steven Wieser
Carla Villacorta
Aly Viny
Voya Financial
Andrew Vzw
Rebecca Wagman
Elise Wagner
Lisa Waller & Sidney Whelan
Aline Waites
Natasha Wancheck
Dennis Ward
Gerald Ward
Meghan Ward
Anna Watkins
Jacob Watson
Carrie Wayment
Ellie Weber
Andrea Weideman
Zach Weingarten
Linda Weinstein
Lou Weiss
Melissa Welger
Johanna Welt
Dustin & Elizabeth Wetzell
Rachel White
Alissa Whittemore
Katie Whitmire
Shauna-lee Whyte
Thomas Winkler
Michael Wishart
John Wojda

Faith Wolitzer
Carrie Wolleman-Stein
Elizabeth Wood
Doris Wood
Allison Wosczyk
Stephen Wright
Jason Xu
Alessandra Yan
Alexis Wolf Yanofsky & Steven Yanofsky
Barbara Yastine
Laura Yoo
Sin Hee Yoon
Roman Yosh
Bella You
Isabelle Young
Sister Cleve Youngblood
Alex Yu
Larry Yu
Alexa Yurick
Deb Zebrowski
Lucy Zhang
Yul Zhu

GOLD STAR GIVERS ★

Anonymous
Elise Boyan
Lauren Bugbee
Lindsey Olson Collins
Carlos Da Silva
Meghan Hadlock
Kaisha Haig
Stephanie Hubbell
Mohamad Khaled
Eliana Morales
Julia Reger
Judith Samuelson and Victor Henschel
Emily Serwer
Amanda Sevareid
Alyson Stein
Tom and Phoebe Styron
Elizabeth Swindell
Barbara Weisz
Tom Wells and Lee Tannen
Matthew Williams and Maribel Ledezma-Williams
Mahnaz Zahedi

BUDDIES

Nancy Barry
Annette Bigelow
Anne Black
Laura Blankfein
Bombas
Rebecca Burgess
The Buckley School
Margaret Carson
Janie Deegan
Susan DeMaio
Greenberg Traurig
Hess Corporation
Justice

Lu Imbriano
Caroline LoFaro
L'Oreal
Macy's
Jill Marino
Neda & Peri Navab
Neuberger Berman
Pajama Project
Park Avenue Methodist Day School
Cynthia Polk-Allen
PPE2NYC
Alex & Amy Rotter
Julia Scheuer
Julienne Silverman
John Sykes
Laurie Sykes
Tiger Global

GUARDIANS

Tony DeVito, you are the best

Emily Adler
Rafita Ahlam
Concepcion Alvar
PO Yuri Alvarez
Lucy Amicucci
Maria Angelov
Emary Aronson
Hon. Diana Ayala
Susan J. Baer
Bailen
Arielle Bakst
Avi & Rebecca Banyasz
Jack Banyasz
Amy Barger
Ayana Bartholomew
Sandra Atlas Bass
Sandye Berger
Hannah Bernard
Blu de Tiger
Janelle Bradley
Ann Brashares & Jacob Collins
Hon. Gale Brewer
Diane Brownstone
Charles Buice
Kelley Burke
Susan Cahn
Chancellor Richard Carranza
Kelvin Chan
Christina Choi
Comm. Dave Chokshi
Caroline Cochran
Peter Coleman & Leah Doyle
Dorothy Congemi
Yassana Croizat-Glazer
Hon. Andrew Cuomo
Nancy Cutler
Joan Davidson
Cat Davis
Janie Deegan
Hon. David N. Dinkins

Inanna Donnelley & Jeffrey Taback
Pat Duff
John Duffell
Laura Eule
Friends with Dads, NYU
Julius & Belma Gaudio
Grace Gerber
Roy & Gail Geronemus
Hon. Vanessa Gibson
Kathie Lee, Cody & Cassidy Gifford
Mia Gladstone
Margaret Glaspy
Emily Glasser
Nancy Glickenhau
Malinda Goldberger
Mollie Goldstein
Tim & Karen Goodell
Harrison Greenberg
Julia Gruen
Deborah Guider
Erika Gutter
Susan Halpern
Lynda Hamilton
Mike Heavey
Hugh Hogan
Kate Holliday
Vincent Hom
Michael Honig
Jeff & Patty Horing
Taylor Jeanne
Joyce Johnson
Leslie Johnson
Paul Tudor Jones
Michelle Kamen
Lily Kaplan
Mete Karakaya
Kobre & Kim
Eugene Kim
Kenneth Kind
Katie Kirkwood
Fawn Krieger
Joan Lacagnina
James Lee
Cavin Leeman
Kenny & Katherine Lerer
Al Levi
Kelli Lewis
Kate Liebman
Caroline LoFaro
Olivia Lopez-Balboa
Sanford Loewentheil
Marianne Macrae
Tony & Shelly Malkin
Hon. Carolyn Maloney
Pat & Mike Marshall
Anna Mathew
Adam Melchor
George Matteson & Adele Ursone
Bruno Mejean & Martina Hund-Mejean

Ron Moelis
Margaret Moloney
Jenna Morgenstern
Brunilda Moriarty
Wes Moore
Monsignor Gregory Mustaciuolo
Lisa Nadler
Meghan Naik
Megan Neunan
Lucy Nuttall
Scott & Amie Nuttall
Teddy Nuttall
Greta O'Brien
Overcoats
Dominick & Jennifer Pace
Reginald Paige
Lucian & Bernice Paone
Jacqueline Patel
Hon. Bill Perkins
Scott Peterman
Ben Peyser
Gingi Pica
Gineth Pineda
Trena Pitchford
Abi Polinsky
Comm. Sheila Poole
Porches
Dina Powell
Samantha Powell
Rachel Printy
Victoria Pryor
Bambi Rattner
Dawn Rattner
Sarah Rebar
Lorraine Riley
Greiny Rodriguez
Alex Ross
Sarane Ross
Alex & Amy Rotter
Matt Roveto
PO Sean Ryan
Lisa Sabbiondo
Matthew & Natalie Salimbene
David Saltzman
Samia
Lawrence Sang
Isaac Saufer
Henry & Peggy Schleiff
Julia Scheuer
Hon. Rebecca Seawright
Emily Serwer
Eugene Shalik
Jamie Shedrofsky
Alexandra Siddall
Zach Slater
Ronald Sobel
Michael Sonnenfeldt & Katja Goldman
Alyson Stein
Benjamin Stern
Comm. Ann Marie Sullivan, MD
Josh Tam

Lee Tannen & Tom Wells
Brian Thomas
Stephen & Kelly Thompson
Torres
Amy Beth Treciakas
Tara Swanson
Mackenzie Swirbul
Daryl Brown Uber
Lisa Vandivort
Daniel Vitaletti
Winnie Wang
Tom Winkler
Ashley Wolitzer
Michael & Lynne Wolitzer
Louis Zieja
Jason Zieran
Diane Zimmerman
Comm. Howard Zucker, MD

VOLUNTEERS

Seth Abeles
Ava Alicea
Nicole Allen
Eliane Amino
Joshitha Arora
Kristen Avery
Arielle Bakst
Dina Bakst
Sunny Barish
Daniela Bartalini
Patrick Beeson
Blake Bennett
Christina Bertomo
Lauren Bettman
Ryan Birney
Max Bradley
Jordan Braha
Leigh Brill
Teddy Brita
Cole Brountas
Tinamarie Brown-Joseph
Alexander Brush
Olivia Caruso
Maria Cerini
Anna Chen
Martha Cheslow
Corinne Chmielewski
Ymani Clare
Amy Cohen
Rex Cohen
Charles Conklin
Brie Corona
Myles Coven
Eli Cox
Robert Cox
Andy Cuzco
Kristina Cvjeticanin
Helena Davidson
Olivia Davis
Andrea Dammert
Paula Dammert
Adam DeAngelo
Zara Deershowitz
Edward Delatorre
Christina Deodatis
Keith Destaebler
Juana Diaz
Ella Dior
Shauna Dixon-Chang
Joey Doughan
Ian Duffy
Sara Elbaum

Kiara Escobar
Maria Estrada
Sonia Feinstein
Owen Fischbach
Daniella Franco-Romo
Melanie Friedman
Rachel Frimer
Paloma G
Elizabeth Galett
Alex Gendzien
Lila Gimbel
Olive Gloman
Abigail Goen
Malinda Goldberger
Anna Goldman
Gabrielle Gomez
Miette Gourlay
Hayden Grable
Alex Gendzier
Luca Gendzier
Katie Guastella
Andrea Gumina
Gregory Guzman
Leah Hayem
Diana Holic
Katie Holliday
Yasaman Hoorazar
Sarah Hopper
Ahmed Ikli
Amelia Jackson
Paloma Jourdes
Adina Kagan
Christian Khoury
Lara Kling
Livvy Kramer
David Kritzer
Lily Kurtz
Felix Lam
Natasha Lambropoulos
Lily Levick
Oliver Levick
Hudson Levin
Spencer Levin
Margot Levy
Tomomi Lewis-Noguchi
Benjamin Lillis
Jennifer Livak
Jessica Luck
Justin Luckner
Deborah Manocchia
Milena Manocchia
Tony Manocchia
Jill Marino
Bobby Mark
Joanie Martinez
Rita Maxwell
Timothy McGarry
Avianna McGhee
Joe McKenna
Kaitlin McQuade
Jacqueline Medina
James Molz
Pater Monteleone
Veronica Moo
Tara Mora
Jenna Morgenstern
Christopher Morrison
Eric Moss
Tobi Mulliner
Roselyn Murphy
Chris Murray
Peter Murray
Amalia Nachman
Lisa Nadler
Katie Nakano
Alexa Nanes
Kathleen Napolitano

Neda Navab
Nicholas Navab
Peri Navab
An Nguyen
Amie Nuttall
Lucy Nuttall
Teddy Nuttall
Kyle Obletz
Paul O'Connell
Denis O'Donoghue
Pablo Ortega
Mike Pantaleno
Jonah Pessin
Jarrah Peters
Ben Peyser
Zachary Phlegar
Nujria Royo Planas
Amy Powell
Jessica Powell
Samantha Powell
Jordana Prince
Meghan Prisco
Phil Prisco
Annabelle Rabinovici
Shruti Raju
Montanna Riggs
Katey Riordan
Austin Rubino
Natalie Salimbene
Allison Saloy
Noa Santacruz
Merari Santos-Dominguez
Caroline Schlumberger
Alma Schneider
Rebecca Schweiger
Kyra Selden
Laura Shahim
Fernanda Sheridan
Elizabeth Silver
Jamie Silver
Marius Vaydie Silvero
Lila Silverstein
Hope Simmons
Jack Smalls
Maia Smith
Connor Stewart
Maxwel Stein
Alexia Suarez
Ella Sunshine
Catherine Sutterlin
Hank Szala
Frankie Talty
Siran Tanitlyan
Amaya Tavares
Natalie Tehrany
Penelope Tejada
Ana Tressel
Kate Tressel
Laura Tressel
Grace Triquet
Taylor Truesdale
Morgan Turner
Nancy Virdi
Matt Virtudes
Lara Vitiello
Evely Walsh
Ian Wareham
Alice Wasserman
Kaylee Weil
Dominic Wilson
Audrey Wisch
Miranda Wollen
Caroline Wood
Amy Wright
Michelle Wu-Buchenholz
Peter Wu-Buchenholz
Jaslyn Ziegler

Organizations

92nd Street Y
Addie Mae Collins Community Services
Advocates for Children
Aegis Domestic Violence Program
Albert Einstein College of Medicine
Center for Infants Toddlers and Families
Art Explorers
Art Farm NYC
E. & Thelma Adair Community Life Center
Association of Greater New York
Bailey House
Bank Street College of Education
Barnard College
Barrier Free Living/Freedom House
Beth Israel Medical Center
Birch Wathen Lenox School
Blondell Joyner
Boriken Neighborhood Center
Boys’ Club of New York
Brearley School
Bronx Defenders
Bronx Works
Capital Prep
Cardinal McCloskey Community Services
Cathedral High School
Catholic Big Sisters and Big Brothers
Catholic Guardians
Center for Urban Community Services
Chanel, Inc.
Children’s Aid Society
Children’s Defense Fund
Children’s Hospital at Montefiore
Church of Christ Latter Day Saints
COFCCA
Coordinated Behavioral Care
Harlem 1st Ward
MSA
Church of the Holy Trinity
Churchill School and Center
Citizens Care Day Care Centers
City College – Alpha Epsilon Delta
City University of New York
Baruch College
Borough of Manhattan Community College
City College
Hunter College
Hunter College School of Social Work
Hunter College Schools of the Health Professional
Institute for State and Local Governance
John Jay College
Lehman College Service Corps
Coalition for Children with Special Needs
Columbia University
Barnard College
Mailman School of Public Health
School of Social Work
Teachers College
Community Board 4
Community Board 8
Community Board 11
Community Service Society of New York
Community School 154
Cool Culture
Cornell University Cooperative Extension New York City
Corporation for Supportive Housing
Council of Family and Child Caring Agencies
Council on Accreditation
Council on Homeless Policies and Services
Cristo Rey
Dalton School
Delta Sigma Theta Society, Inc.
New York Alumnae Chapter
Democracy Prep Schools
Dominican Academy
DREAM

East Harlem Asthma Center of Excellence
East Harlem Block Nursery
East Harlem Community Partnership Program
East Harlem Council for Community Improvement
East Harlem Council for Human Services
East Harlem Neighborhood Based Alliance
Corporation
Edwin Gould Services for Children and Families
El Barrio’s Operation Fight Back
Episcopal Social Services
Father’s Heart Ministries
Five Star Early Learn Center
Foundation for Healthy Hispanic Families
Fresh Youth Initiatives
Friends of the Children of New York
God’s Love We Deliver
Goldman Sachs
Graham Windham
Grow NYC – Farm to Preschool
Gwendolyn Bland
Harlem Academy
Harlem Children’s Zone
Harlem Dowling
Harlem RBI
Head Start Sponsoring Board Council
Healthy Eyes Alliance
Healthy Food for Upper Manhattan
Healthy Mothers Healthy Babies
Hewitt School
High School of Art and Design
Hope Community, Inc.
Human Services Council
Hunter College High School
Hunter Schools of the Health Profession
Incarnation Children’s Center
INCLUDEnyc
Independent Schools Admissions Association of Greater New York
Iona College
Jefferson House Jobs-Plus
Kingsbridge Heights Community Center
La Casita de la Salud
Lafayette Academy
Legal Aid Society
Leggett Memorial Child Care Center
Little Sisters of the Assumption Lower East Side
Lower East Side Family Credit Union
Manhattan College Lead Week Program
Manhattan Land Trust
Manhattan Family Resource Center
Manhattan School of Music
Marymount School
Material for the Arts
Metropolitan Hospital Center
MFY Legal Services
Mid Bronx CCRP EEC
Mobilization for Justice
Montefiore Hospital
Morris Heights Health Center
Mount Sinai Medical Center Adolescent Health Center
Mount Sinai St. Luke’s Child and Family Institute
National Head Start Association
Neuberger Berman
New Alternatives for Children
Newton Day School
New York Cares
New York Center for Children
New York Center for Child Development
New York City Administration for Children Services
New York City Coalition for Children with Special Needs
New York City Community Planning Boards – Bronx CD 3/4 , Manhattan CD 4/5
New York City Continuum of Care Coalition
New York City Department of Education
Committee on School Education
Committees for Preschool Special Education
Region 9
Region 10
Center Based Support Team

Beacon High School
Bronx Science
Brooklyn Tech
Clinton School for Writers and Artists (MS 260)
Columbia Secondary School (MS260)
Community Action School (MS 258)
Dual Language Middle School (MS247)
Eleanor Roosevelt High School
Henry Highland Garnet School for Success (PS 175)
Jacqueline Kennedy Onassis High School
Joan of Arc Campus
Lafayette Academy
LaGuardia High School
Manhattan Early College for Advertising
Manhattan School for Children
Millenium High School
Murry Bergrtraum High School
New Design Middle School (MSS 514)
Public School 6
Public School 30
Public School 79
Public School 155
Public School/Middle School 165
Public School 206
Stuyvesant High School
Urban Assembly Emergency Management Services High School
Urban Assembly Maker High School
Yorkville Community School

New York City Department of Health & Mental Hygiene
Bureau of Children, Youth, and Families
Bureau of Day Care
Early Intervention Program
New York City Department of Homeless Services
New York City Department of Housing and Community Renewal
New York City Department of Housing Preservation and Development
New York City Department of Parks & Recreation
New York City Department of Transportation
New York City Department of Youth & Community Development
New York City Fire Department
Engine Company 22
Ladder 13 10th Battalion
Engine Company 35
Ladder 14 12th Battalion
Engine Company 53
Ladder 43 4th Battalion
New York City Family Justice Center - Manhattan
New York City Human Resources Administration
New York City Police Department
19th Precinct
23rd Precinct
25th Precinct
26th Precinct
44th Precinct
Explorers

New York Common Pantry
New York Institute of Technology
New York Presbyterian Hospital
New York Restoration Project
New York State Department of Education
New York State Department of Health
New York State Office of Children & Families
New York State Office of Mental Health
New York Theatre Ballet – LIFT Community Services
New York State Office of Temporary and Disability Assistance
New York University
School of Dentistry
School of Social Work
Steinhardt School of Culture, Education and Human Development
Wagner School of Public Service
New York Urban League
Northern Manhattan Improvement Corporation
Northern Manhattan Perinatal Partnership
Northside Center for Child Development, Inc.
Nyack College School of Social Work
NYPD Explorers
Odyssey House

Pace University
Palladia, Inc.
Parent-Infant Psychotherapy Program
Parents League
Park Avenue Medical
Partnership for Afterschool Education
Partnership for a Healthier Manhattan
Partnership for the Homeless
Philliber Research and Evaluation
Planned Parenthood of New York City
Police Athletic League
Princeton Project 55 AlumniCorps
PS 7
Puerto Rican Family Institute
QUALITY stars NY
Regis High School
River East School
Ryan Health
Safe Horizon
St. Jean the Baptiste High School
St. Luke’s Hospital
St. Simon Stock
Salvation Army Bronx Citadel Early Learn Center

Salvation Army Tremont Child Care
Samaritan Village Mother Child Program
SCAN-Harbor
Settlement Health & Medical Services
Services for the Underserved
Sharon Baptist Head Start Center 2
Sinergia, Inc.
South Bronx Rising Together
STEPS to End Family Violence
Strive
Strong Starts Court Initiative
Supportive Housing Network of New York
Teak Fellowship
Temple Emanu-El
The Door
The Jewish Board
Trevor Day School
Trinity School
Union Settlement Association
UNIS
United Bronx Parents
United States Department of Health & Human Services
Administration for Children and Families
University Settlement
Urban Academy
Urban Horizons Early Discovery Center at WHEDco
Utopia Youth Program
Vibrant Emotional Health
Violence Intervention Program
West Side Federation for Senior and Supportive Housing
Women in Need
Xavier High School
Yale University

Pro Bono Legal Services

Karin Barkhorn
Adam Bernstein
Covington & Burling LLC
David Frankel
David Giller
Meredith Kane
Andrew Kofsky
Kramer Levin Naftalis & Frankel
Richard Leland
May Mansour
Aaron Marks
Michael Martinez
Max Nowak
Paul Weiss Rifkind Wharton & Garrison
Katherine Porter

Kristina Runje
Nicole Q. Saldana
Hasan Shafiqullah
Simpson Thacher & Bartlett
Audra Soloway
Zoe Sternberg
Michael Werner
Michael Wolitzer
Eileen Woo

Staff

Gretchen Buchenholz,
Co-Founder & Executive
Diretor
Eri Noguchi, Associate
Executive Director
Matthew Manger, Chief
Financial Officer
Marie Nguyen, Chief
Program Officer
George Edwards, Senior
Development Manager

Directors bolded

Rhonda Abel, Yarden Abittan, Carmen Albelo, Miguelina Almanzar, Nancy Alvarez, Yana Alvarez, Andriana Andino, Evelyn Aquino, Dianna Baez, **Jackeline Bancayan**, Janneth Bancayan, Tina Barnett, **Cindy Bautista**, Enoch Bekoe, Tabitha Bellavoix, Amy Bello, Kimberly Bello, **Sheryl Benjamin**, Bernadette Bergancia, Amanda Belardo, Beth Bertoldi, Eva Bitter, **Sara Bobok**, Kelly Bojos, **Leny Bolivar**, Thelia Bonds, Ebony Boone, Margaret Boyd, **Jeffrey Bradley**, Neckeyta Bramble, Dominique Bratton, Likisha Bray, Barbara Brewer, Janet Brito, **Mimi Broner, Tara Brown**, Miggle Buchenholz, Nicole Buchenholz, Kerry Buckley, Chanelly Bueno, Cynthia Buford, April Cacho, Margie Calderon, Maria Calixto, Siena Cardamone, Marlen Carino, Cameron Carter, **Jessica Casanova**, Cristal Castillo, Janine Cheng, Merry Cheng, Mei Cheung, Erica Choi, Maria Christoforou, Josefina Cibelli, Raquel Claxton, Larua Cohen, **Harmonie Coleman**, Carmen Colon, Emily Conway, Nathalie Contreras, Isamar Council, Francesca Crane, Abigail De La Rosas, Vivian De Leon, Jillian De Riggi, Mercedes Delgado-Lantigua, Daniela Demarquet, Doris Demarquet, Kirsten Donovan, Nadia Amaro Douglass, Edyta Drahaimn, Arinelis Duran, **Melissa Durkee**, Shawana Eaddy, Kate Ellison, Ruth Enriquez, Hannah Fein, Jara Filaj-Dimitriadis, Rachel Fischer, Marielle Fisher, Joana Fittipaldi, Lindsay Fitzgerald, Miguel Sira, Rebecca Forer, Roberta Francis, **Caitlin Gallagher, Alan Galo**, Adalgisa Garcia, Alberlis Garcia, Laura Garcia, Vanessa De Jesus Garcia, Ana

Garcia-Torres, Rosendale Garcon, Brenda Viloría, Zaida Villavicencio, Leslie Wildes, **Carrie Wolleman-Stein**, Allison Wosczyk, **Linda Wosczyk**, Francis Gonzalez, Jimmy Gonzalez, Nari Yang-Kim, Briana Young, Maria Zapata, Nebaet Zenuni
Board of Directors
Thomas B. Styron,
Co-Founder & Chair
Rebecca Banyasz
Mitchell S. Bernard
Marian Wright Edelman
Hon. Helen Freedman
Timothy Goodell
Karena Gore
Stephen Graham
Blanche Johnson
Meredith Kane
Joan Lacagnina
Kenneth Lerer
Olga Lynn
Amie Nuttall
Michael Nutter
Anil Stevens, Treasurer
Rose Styron
Dermot Sullivan
Michael Wolitzer
The Late Harry (HOH)
Frelinghuysen, Honorary
Chair
The Late Honorable David N. Dinkins, always
beloved
Julius Gaudio, Ex Officio*
Gregory Lee, Ex Officio*
Officers
Gretchen Buchenholz,
President
Michael Lewis, Vice
President
Peter Wu-Buchenholz,
Secretary
Circle Fidelis
Tony Anagnostakis
Sandye Berger
Deborah Brown
Abigail Disney
George & Nonnie
Frelinghuysen
Kathie Lee Gifford
The Goodell Family
Ian James
Amy & Alex Rotter
Lee Tannen & Tom Wells
Stephen & Kelly
Thompson
Barbara Weisz
Leslie Wildes
Linden & Scott Wise
Garcia-Torres, Rosendale
Garcon, Brenda Viloría, Zaida Villavicencio, Leslie Wildes, **Carrie Wolleman-Stein**, Allison Wosczyk, **Linda Wosczyk**, Francis Gonzalez, Jimmy Gonzalez, Nari Yang-Kim, Briana Young, Maria Zapata, Nebaet Zenuni
Board of Directors
Thomas B. Styron,
Co-Founder & Chair
Rebecca Banyasz
Mitchell S. Bernard
Marian Wright Edelman
Hon. Helen Freedman
Timothy Goodell
Karena Gore
Stephen Graham
Blanche Johnson
Meredith Kane
Joan Lacagnina
Kenneth Lerer
Olga Lynn
Amie Nuttall
Michael Nutter
Anil Stevens, Treasurer
Rose Styron
Dermot Sullivan
Michael Wolitzer
The Late Harry (HOH)
Frelinghuysen, Honorary
Chair
The Late Honorable David N. Dinkins, always
beloved
Julius Gaudio, Ex Officio*
Gregory Lee, Ex Officio*
Officers
Gretchen Buchenholz,
President
Michael Lewis, Vice
President
Peter Wu-Buchenholz,
Secretary
Circle Fidelis
Tony Anagnostakis
Sandye Berger
Deborah Brown
Abigail Disney
George & Nonnie
Frelinghuysen
Kathie Lee Gifford
The Goodell Family
Ian James
Amy & Alex Rotter
Lee Tannen & Tom Wells
Stephen & Kelly
Thompson
Barbara Weisz
Leslie Wildes
Linden & Scott Wise

Policy Council Members
Santa Aviles
Francesca Barreiro
Brenna Calles
Jessica Duggan
Laura Espinosa
Rafaela Garcia
Emiliana Matos
Latisha McNeill
Joana Mendoza
Idaliz Ortiz

Photography

Nicole Buchenholz

In Memoriam

We will forever remeber:
Eva Amigon, Adrienne Bernard
🌿 Roy Brown, Emily Susannah Chandler, Edward “Neddy” Chase, Ralph Cipriani, Peter Del Giudice, Martha Diaz, Mario Diaz-Cruz, The Honorable David N. Dinkins
🌿 First Lady Joyce Burrows Dinkins, Ernest Dodd, Maria Duran, Jim Dwyer, Aaron & Joan Epstein, Constance Fletcher, Harry H. Frelinghuysen
🌿 Liza Friedlander, Arya George, Frank #16 Gifford
🌿 Larry & Florence Grossman, Victoria Martinez Hernandez, Jerzy Jasinski, Lily Keyzner, Abdul Khaliq
🌿 Lilliana Lopez
🌿 Lilliana Lopezvivar, Rita Markus
🌿 Betsy Means, Susan Saldana Albino McGuire, Mike Nichols, Santa Ocasio, Douglas O’Neill, Jesus Pantoja, Pax Perkolaj, Jean Paul & Monique Picot
🌿 Angel Pineda, Laurence Pope, Ofliá Ramos, Milt & Bunny Rattner
🌿 Erick Reyes, Carlos Rivera, Mercedes Olivera Rivera, Howard J.Rubenstein, Sheila Scheingold
🌿 Muhammad Neaz Siddiqui, Virginia Sloane, James Stepney
🌿 Melissa Toro, Heron Vazquez, Mariano Vazquez, Ja’Shya Williams, Ida Wilson, and Brandon, Kenny, Eli, Estafania, Franklin, Keith, Ricky, Samantha, Sean, Stephanie, Thomas, Wilfredo, Wonder, and forever, Norman



BALANCING THE BUDGET



ASSOCIATION TO BENEFIT CHILDREN FISCAL YEAR 2021 BUDGET (consolidated) FOR FISCAL YEAR ENDING JUNE 30, 2021

| INCOME | Early Childhood Programs | Wrap-Around Service Programs | Program Development | Management & General ¹ | TOTAL FY 2021 Annual Budget |
|------------------------------|--------------------------|------------------------------|---------------------|-----------------------------------|-----------------------------|
| Government Income | \$10,986,283 | \$4,474,066 | \$0 | \$0 | \$15,460,349 |
| Private Funding | 0 | 0 | 0 | 0 | 0 |
| Private Tuition ² | 1,658,200 | 0 | 0 | 0 | 1,658,200 |
| Other Income | 0 | 2,314,563 | 0 | 0 | 2,314,563 |
| Total Budgeted Income | \$12,644,483 | \$6,788,629 | \$0 | \$0 | \$19,433,112 |

| EXPENSES | Early Childhood Programs | Wrap-Around Service Programs | Program Development | Management & General | TOTAL FY 2020 Annual Budget |
|--|--------------------------|------------------------------|---------------------|----------------------|-----------------------------|
| Employee Salaries & Benefits | \$8,361,333 | \$5,581,334 | \$319,411 | \$1,753,873 | \$16,015,951 |
| Direct Program Expenses | 833,995 | 355,975 | 36,050 | 111,650 | 1,337,670 |
| Professional Fees | 1,113,579 | 465,090 | 0 | 0 | 1,578,669 |
| Supporting Program Expenses | 736,960 | 387,188 | 39,849 | 98,186 | 1,262,183 |
| Indirect Program Expenses ³ | 2,892,285 | 1,595,960 | 4,179 | (1,993,525) | 2,498,899 |
| Depreciation and Amortization | 575,017 | 86,730 | 0 | 29,816 | 691,564 |
| Total Budgeted Expenses | \$14,513,170 | \$8,472,277 | \$399,489 | \$0 | \$23,384,935 |
| Private Need | (\$1,868,687) | (\$1,683,648) | (\$399,489) | \$0 | (\$3,951,823) |

¹ These costs are segregated but have been allocated amongst applicable programs using approved allocation methodologies.

² Private Tuition applies exclusively to ABC's Merricat's Castle School.

³ Indirect Expenses also include ABC's administrative overhead costs. These costs are allocated to programs by ratio-value method. ABC's administrative overhead is 9% of total budgeted expenses.

STATEMENT OF PROGRAM INCOME AND EXPENSES FOR FISCAL YEAR ENDING JUNE 30, 2020

| EXPENSES | EARLY CHILDHOOD PROGRAMS | | | | |
|--|--------------------------|--------------------------|--------------------|---|--------------------|
| | ECHO PARK GRAHAM SCHOOL | MERRICAT'S CASTLE SCHOOL | CASSIDY'S PLACE | EARLY INTERVENTION CODY GIFFORD/ KEITH HARING | COVID-19 RELIEF |
| Employee Salaries and Benefits | \$2,315,658 | \$1,138,683 | \$2,540,365 | \$1,667,931 | \$588,520 |
| Direct Program Expenses | 376,386 | 452,250 | 203,391 | 53,160 | 417,794 |
| Professional Fees | 87,447 | 1,593 | 62,299 | 755,955 | 417,794 |
| Supporting Program Expenses | 211,660 | 56,993 | 207,633 | 99,550 | 417,794 |
| Indirect Program Expenses ¹ | 1,009,618 | 409,866 | 682,035 | 446,260 | 417,794 |
| Depreciation and Amortization | 299,709 | 3,526 | 227,802 | 1,599 | |
| Total Functional Expenses | \$4,300,476 | \$2,062,911 | \$3,923,524 | \$3,024,455 | \$2,259,696 |

| EXPENSES | WRAP-AROUND SERVICES | | | | |
|--|--|--|-----------------|------------------------------|----------------------|
| | FAST BREAK Children's Mental Health Services | Youth Development Afterschool, Camp Calvin | THE OPEN DOOR | Permanent Supportive Housing | ALL CHILDREN'S HOUSE |
| Employee Salaries and Benefits | \$2,817,795 | \$469,186 | \$25,748 | \$104,463 | \$3,408,030 |
| Direct Program Expenses | 104,865 | 104,823 | 14,285 | 1,048 | 135,424 |
| Professional Fees | 319,545 | 6,670 | 614 | 0 | 0 |
| Supporting Program Expenses | 158,376 | 54,930 | 6,438 | 24,927 | 202,395 |
| Indirect Program Expenses ¹ | 786,289 | 264,958 | 5,407 | 202,779 | 800,060 |
| Depreciation and Amortization | 21,819 | 56,738 | 364 | 28,297 | 14,699 |
| Total Functional Expenses | \$4,208,690 | \$957,306 | \$52,857 | \$361,515 | \$4,560,607 |

| EXPENSES | SUPPORTING SERVICES | | Grand Total ABC Operations |
|--|--|-----------------------------------|----------------------------|
| | Management & General Operations ² | Program Development & Fundraising | |
| Employee Salaries and Benefits | \$1,468,117 | \$274,943 | \$16,819,439 |
| Direct Program Expenses | 124,510 | 27,540 | 2,015,475 |
| Professional Fees | 0 | 0 | 1,651,917 |
| Supporting Program Expenses | 203,309 | 21,572 | 1,665,575 |
| Indirect Program Expenses ¹ | (1,835,215) | 16,627 | 3,206,479 |
| Depreciation and Amortization | 39,280 | 944 | 694,777 |
| Total Functional Expenses | (0) | \$341,626 | \$26,053,662 |

¹ Indirect Expenses also include ABC's administrative overhead costs. These costs are allocated to programs by ratio-value method. ABC's administrative costs total \$1,740,852 representing 7.45% of total operating expenses.

² These costs are segregated but have been allocated amongst applicable programs using approved allocation methodologies.

³ Private Tuition applies exclusively to ABC's Merricat's Castle School.

| STATEMENT OF PROGRAM INCOME | | | | | |
|------------------------------|--------------------------|----------------------|--------------------|-----------------------------|---------------------|
| INCOME | Early Childhood Programs | Wrap-Around Services | COVID-19 Relief | General Operations/ Support | TOTAL |
| Government Funding | \$8,725,567 | \$6,656,897 | \$623,900 | \$1,062 | \$16,007,427 |
| Private Funding | 937,946 | 846,787 | 1,579,217 | 2,188,657 | 5,552,608 |
| Private Tuition ³ | 1,683,822 | 0 | 0 | 0 | 1,683,822 |
| Other Income (Earned) | 82,923 | 2,666,732 | 0 | 15,706 | 2,765,361 |
| Other Income (Unearned) | 31 | 18 | 0 | 381,838 | 381,886 |
| Grand Total | \$11,430,289 | \$10,170,434 | \$2,203,117 | \$2,587,264 | \$26,391,104 |

STATEMENT OF NET ASSETS

| | |
|----------------------------|---------------------|
| NET ASSETS | |
| Land, Building & Equipment | \$5,885,226 |
| Unrestricted | 12,297,632 |
| Temporarily Restricted | 1,074,708 |
| TOTAL FUND BALANCES | \$19,257,565 |

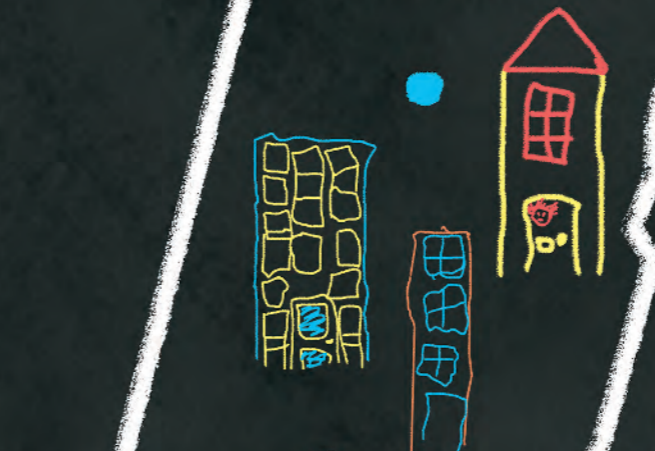
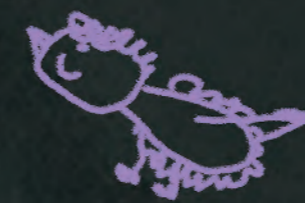
Charity Navigator has awarded ABC four out of a possible four stars. In earning a four-star rating for the eleventh consecutive time, ABC has demonstrated strong financial health and commitment to accountability and transparency. Only 1% of the charities rated have achieved eleven consecutive four-star ratings, which indicate that ABC outperforms most other charities in America. This exceptional designation from Charity Navigator sets ABC apart from its peers and demonstrates to the public its trustworthiness.



OUR LOCATIONS

KEY

- Early Childhood Programs
- Youth Services
- Family Support
- Preventive Services
- Children's Mental Health Services
- Supportive Housing
- ABC Offices



BRONX

Echo Park Family Center

MANHATTAN

ABC Central Office & Cassidy's Place

Early Childhood Programs

- The Graham School
1841 Park Ave
- Merricat's Castle School
316 E 88th St
- Cassidy's Place
419 E 86th St
- Keith Haring School
318 E 116th St
- Cody Gifford House
404 E 91st St

Family Support, Youth, and Wrap-Around Services

- Echo Park
1841 Park Ave
- Bunny's Garden
236-242 E 124th St

Supportive Housing Program

- Permanent Supportive Housing
318 E 116th St

Preventive Services

- All Children's House
345 E 102nd St

Fast Break Children's Mental Health Services

ABC Fast Break Clinics

- Fast Break: Echo Park
1841 Park Ave
- Fast Break: The Bronx
1366 Inwood Ave
- Fast Break: 115th Street
158 E 115th St
- Fast Break+
316 E 88th St

School-based Licensed Mental Health Clinics (Satellite Clinics)

- Joan of Arc Complex
154 W 93rd St
- Murry Bergtraum High School Campus
411 Pearl Street
- Yorkville Community School (PS 151)
421 E 88th St
- PS 206/PS 112
508 E 120th St

School-based Mental Health Programs

- CS 154: Harriet Tubman School
250 W 127th St
- Columbia Secondary School
425 W 123rd St
- New Design MS
625 W 133rd St
- Jacqueline Kennedy Onassis HS
120 W 46th St
- The Clinton School for Writers and Artists
10 E 15th St
- Dual Language MS
100 W 77th St
- PS 7
160 E 120th St
- Art and Design High School
245 E 56th Street

Hospital Partners

- NewYork-Presbyterian (CHONY)
622 W 168th St

ASSOCIATION TO BENEFIT CHILDREN



419 East 86th Street New York, NY 10028
Phone: 212-845-3821

www.a-b-c.org